

CYP27A1 Polyclonal Antibody

Catalog No: #40811

Package Size: #40811-1 50ul #40811-2 100ul

Orders: order@signalwayantibody.comSupport: tech@signalwayantibody.com

Description

Product Name	CYP27A1 Polyclonal Antibody
Host Species	Rabbit
Clonality	Polyclonal
Purification	The antibody was affinity-purified from rabbit antiserum by affinity-chromatography using epitope-specific immunogen.
Applications	WB IHC IF ELISA
Species Reactivity	Hu
Specificity	CYP27A1 Polyclonal Antibody detects endogenous levels of CYP27A1 protein.
Immunogen Type	peptide
Immunogen Description	Synthesized peptide derived from the Internal region of human CYP27A1.
Target Name	CYP27A1
Other Names	CYP27A1; CYP27; Sterol 26-hydroxylase; mitochondrial; 5-beta-cholestane-3-alpha,7-alpha,12-alpha-triol 27-hydroxylase; Cytochrome P-450C27/25; Cytochrome P450 27; Sterol 27-hydroxylase; Vitamin D(3) 25-hydroxylase
Accession No.	Swiss-Prot: Q02318NCBI Gene ID: 1593
Uniprot	Q02318
GeneID	1593;
SDS-PAGE MW	60kd
Concentration	1mg/ml
Formulation	Liquid in PBS containing 50% glycerol, 0.5% BSA and 0.02% sodium azide.
Storage	Store at -20°C/1 year

Application Details

Western Blot: 1/500 - 1/2000.

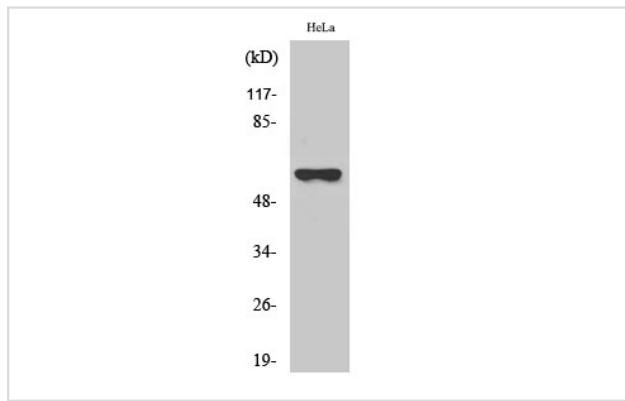
Immunohistochemistry: 1/100 - 1/300.

Immunofluorescence: 1/200 - 1/1000.

ELISA: 1/10000.

Not yet tested in other applications.

Images



Western Blot analysis of HeLa cells using CYP27A1 Polyclonal Antibody

Note: This product is for in vitro research use only