

CYP2E1 Polyclonal Antibody

Catalog No: #40815

Package Size: #40815-1 50ul #40815-2 100ul

Orders: order@signalwayantibody.comSupport: tech@signalwayantibody.com

Description

Product Name	CYP2E1 Polyclonal Antibody
Host Species	Rabbit
Clonality	Polyclonal
Purification	The antibody was affinity-purified from rabbit antiserum by affinity-chromatography using epitope-specific immunogen.
Applications	WB IHC IF ELISA
Species Reactivity	Hu Ms Rt
Specificity	CYP2E1 Polyclonal Antibody detects endogenous levels of CYP2E1 protein.
Immunogen Description	The antiserum was produced against synthesized peptide derived from human Cytochrome P450 2E1.
Target Name	CYP2E1
Other Names	CYP2E1; CYP2E; Cytochrome P450 2E1; 4-nitrophenol 2-hydroxylase; CYP11E1; Cytochrome P450-J
Accession No.	Swiss-Prot: P05181NCBI Gene ID: 1571
Uniprot	P05181
GeneID	1571;
SDS-PAGE MW	56kd
Concentration	1mg/ml
Formulation	Liquid in PBS containing 50% glycerol, 0.5% BSA and 0.02% sodium azide.
Storage	Store at -20°C/1 year

Application Details

Western Blot: 1/500 - 1/2000.

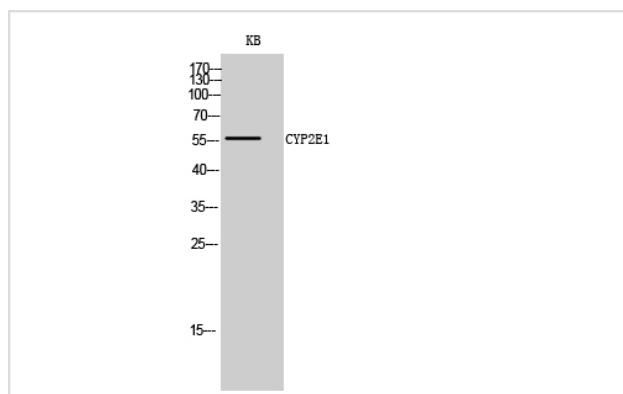
Immunohistochemistry: 1/100 - 1/300.

Immunofluorescence: 1/200 - 1/1000.

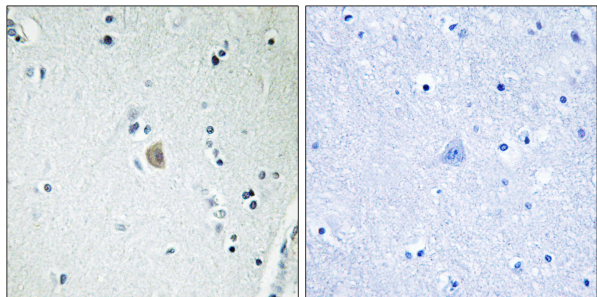
ELISA: 1/5000.

Not yet tested in other applications.

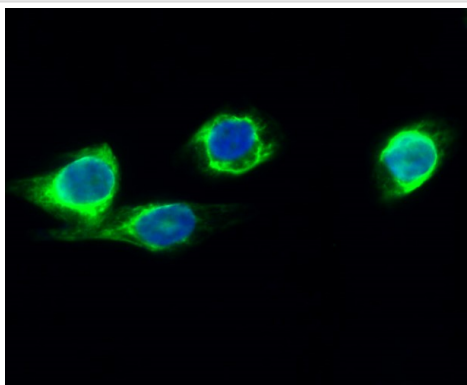
Images



Western Blot analysis of KB cells using CYP2E1 Polyclonal Antibody



Immunohistochemistry analysis of paraffin-embedded human brain tissue, using Cytochrome P450 2E1 Antibody. The picture on the right is blocked with the synthesized peptide.



Immunofluorescence analysis of Hela cell. 1,CYP2E1 Polyclonal Antibody(green) was diluted at 1:200(4° overnight). 2, Goat Anti Rabbit Alexa Fluor 488 Catalog:RS3211 was diluted at 1:1000(room temperature, 50min). 3 DAPI(blue) 10min.

Note: This product is for in vitro research use only