

## Cystatin B Polyclonal Antibody

Catalog No: #40819



Package Size: #40819-1 50ul #40819-2 100ul

Orders: [order@signalwayantibody.com](mailto:order@signalwayantibody.com)Support: [tech@signalwayantibody.com](mailto:tech@signalwayantibody.com)

## Description

Product Name	Cystatin B Polyclonal Antibody
Host Species	Rabbit
Clonality	Polyclonal
Purification	The antibody was affinity-purified from rabbit antiserum by affinity-chromatography using epitope-specific immunogen.
Applications	WB IHC IF ELISA
Species Reactivity	Hu Rt
Specificity	Cystatin B Polyclonal Antibody detects endogenous levels of Cystatin B protein.
Immunogen Type	peptide
Immunogen Description	Synthesized peptide derived from the Internal region of human Cystatin B.
Target Name	Cystatin B
Other Names	CSTB; CST6; STFB; Cystatin-B; CPI-B; Liver thiol proteinase inhibitor; Stefin-B
Accession No.	Swiss-Prot: P04080NCBI Gene ID: 1476
Uniprot	P04080
GeneID	1476;
SDS-PAGE MW	11kd
Concentration	1mg/ml
Formulation	Liquid in PBS containing 50% glycerol, 0.5% BSA and 0.02% sodium azide.
Storage	Store at -20°C/1 year

## Application Details

Western Blot: 1/500 - 1/2000.

Immunohistochemistry: 1/100 - 1/300.

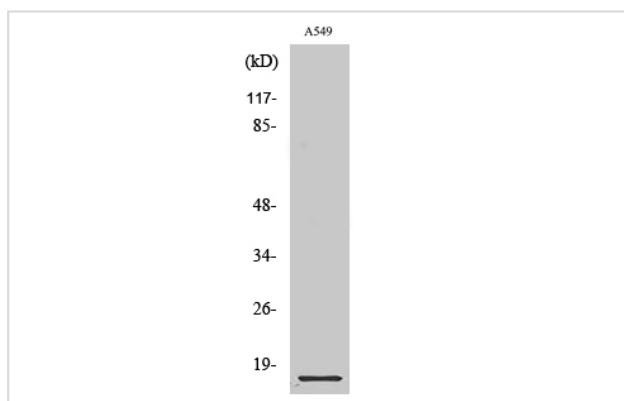
Immunofluorescence: 1/200 - 1/1000.

ELISA: 1/20000.

Not yet tested in other applications.

## Images

Western Blot analysis of A549 cells using Cystatin B Polyclonal Antibody



Note: This product is for in vitro research use only