

## Cystatin C Polyclonal Antibody

Catalog No: #40820

Package Size: #40820-1 50ul #40820-2 100ul

Orders: order@signalwayantibody.com

Support: tech@signalwayantibody.com

## Description

Product Name	Cystatin C Polyclonal Antibody
Host Species	Rabbit
Clonality	Polyclonal
Purification	The antibody was affinity-purified from rabbit antiserum by affinity-chromatography using epitope-specific immunogen.
Applications	WB ELISA
Species Reactivity	Hu Ms Rt Mk
Specificity	Cystatin C Polyclonal Antibody detects endogenous levels of Cystatin C protein.
Immunogen Type	peptide
Immunogen Description	Synthesized peptide derived from the Internal region of human Cystatin C.
Target Name	Cystatin C
Other Names	CST3; Cystatin-C; Cystatin-3; Gamma-trace; Neuroendocrine basic polypeptide; Post-gamma-globulin
Accession No.	Swiss-Prot: P01034NCBI Gene ID: 1471
Uniprot	P01034
GeneID	1471;
SDS-PAGE MW	15kd
Concentration	1mg/ml
Formulation	Liquid in PBS containing 50% glycerol, 0.5% BSA and 0.02% sodium azide.
Storage	Store at -20°C/1 year

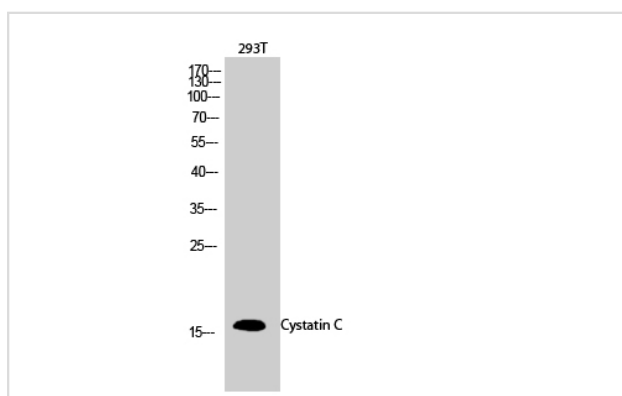
## Application Details

Western Blot: 1/500 - 1/2000.

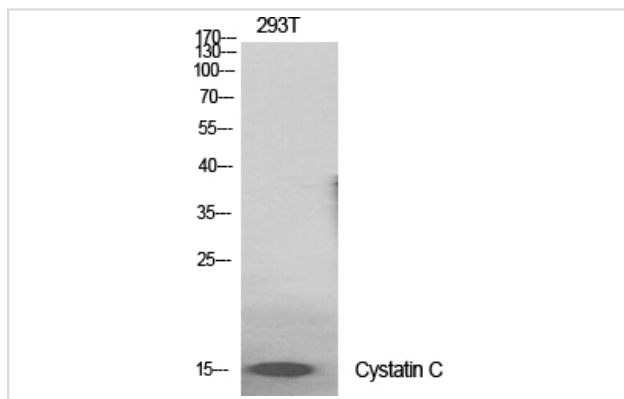
ELISA: 1/40000.

Not yet tested in other applications.

## Images



Western Blot analysis of 293T cells using Cystatin C Polyclonal Antibody



Western Blot analysis of 293T cells using Cystatin C Polyclonal Antibody

---

Note: This product is for in vitro research use only