

Cytochrome c1 Polyclonal Antibody

Catalog No: #40821

Package Size: #40821-1 50ul #40821-2 100ul

Orders: order@signalwayantibody.comSupport: tech@signalwayantibody.com

Description

Product Name	Cytochrome c1 Polyclonal Antibody
Host Species	Rabbit
Clonality	Polyclonal
Purification	The antibody was affinity-purified from rabbit antiserum by affinity-chromatography using epitope-specific immunogen.
Applications	WB ELISA
Species Reactivity	Hu Ms
Specificity	Cytochrome c1 Polyclonal Antibody detects endogenous levels of Cytochrome c1 protein.
Immunogen Type	peptide
Immunogen Description	Synthesized peptide derived from the Internal region of human Cytochrome c1.
Target Name	Cytochrome c1
Other Names	CYC1; Cytochrome c1; heme protein, mitochondrial; Complex III subunit 4; Complex III subunit IV; Cytochrome b-c1 complex subunit 4; Ubiquinol-cytochrome-c reductase complex cytochrome c1 subunit; Cytochrome c-1
Accession No.	Swiss-Prot: P08574NCBI Gene ID: 1537
Uniprot	P08574
GeneID	1537;
SDS-PAGE MW	35kd
Concentration	1mg/ml
Formulation	Liquid in PBS containing 50% glycerol, 0.5% BSA and 0.02% sodium azide.
Storage	Store at -20°C/1 year

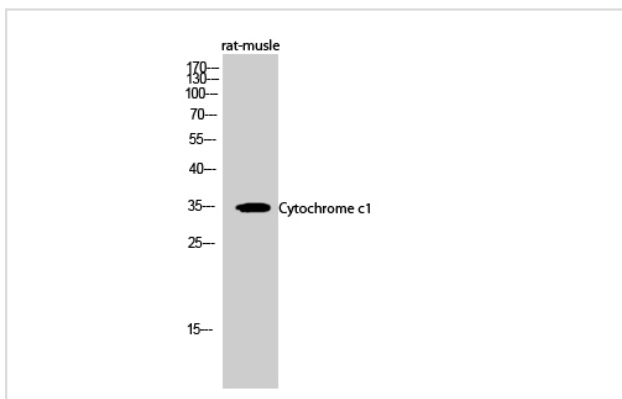
Application Details

Western Blot: 1/500 - 1/2000.

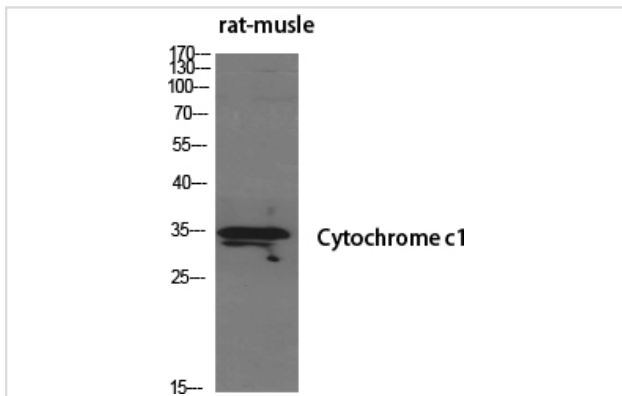
ELISA: 1/20000.

Not yet tested in other applications.

Images



Western Blot analysis of rat-muscle cells using Cytochrome c1 Polyclonal Antibody



Western Blot analysis of RAT-MUCLE cells using Cytochrome c1 Polyclonal Antibody

Note: This product is for in vitro research use only