

## Cytokeratin 17 Polyclonal Antibody

Catalog No: #40822

Package Size: #40822-1 50ul #40822-2 100ul

Orders: [order@signalwayantibody.com](mailto:order@signalwayantibody.com)Support: [tech@signalwayantibody.com](mailto:tech@signalwayantibody.com)

## Description

Product Name	Cytokeratin 17 Polyclonal Antibody
Host Species	Rabbit
Clonality	Polyclonal
Purification	The antibody was affinity-purified from rabbit antiserum by affinity-chromatography using epitope-specific immunogen.
Applications	WB IHC IF ELISA
Species Reactivity	Hu Ms Rt
Specificity	Cytokeratin 17 Polyclonal Antibody detects endogenous levels of Cytokeratin 17 protein.
Immunogen Type	peptide
Immunogen Description	Synthesized peptide derived from the C-terminal region of human Cytokeratin 17.
Target Name	Cytokeratin 17
Other Names	KRT17; Keratin; type I cytoskeletal 17; 39.1; Cytokeratin-17; CK-17; Keratin-17; K17
Accession No.	Swiss-Prot: Q04695NCBI Gene ID: 3872
Uniprot	Q04695
GeneID	3872;
SDS-PAGE MW	48kd
Concentration	1mg/ml
Formulation	Liquid in PBS containing 50% glycerol, 0.5% BSA and 0.02% sodium azide.
Storage	Store at -20°C/1 year

## Application Details

Western Blot: 1/500 - 1/2000.

Immunohistochemistry: 1/100 - 1/300.

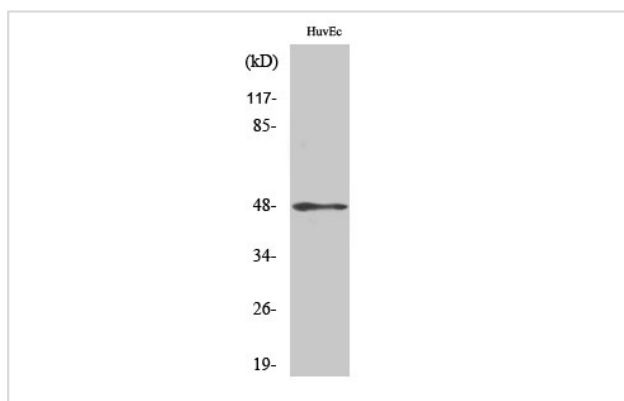
Immunofluorescence: 1/200 - 1/1000.

ELISA: 1/20000.

Not yet tested in other applications.

## Images

Western Blot analysis of HuvEc cells using Cytokeratin 17 Polyclonal Antibody



Note: This product is for in vitro research use only