

Chloroxylenol

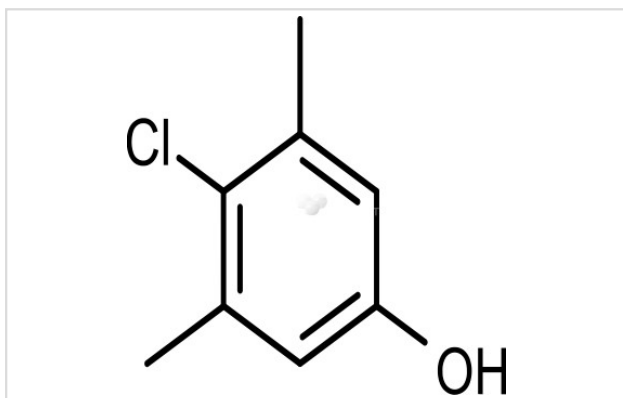
Catalog No: #S0898

Orders: order@signalwayantibody.comSupport: tech@signalwayantibody.com

Description

Product Name	Chloroxylenol
Brief Description	Inhibitors
Purification	99.00%
Target Name	Others
Calculated MW	156.61
Formulation	C ₈ H ₉ ClO
Storage	3 years -20°C powder; 2 years -80°C in solvent;

Images



Product Description

Research Area: Immunology
SMILES: CC1=CC(O)=CC(C)=C1Cl
Pathways: Others
Receptor: Others
Boiling pt: 246°C
Melting pt: 114-116°C
Solubility: Soluble in DMSO
Appearance: White Crystal
Remark: For obtaining a higher solubility, please warm the tube at 37 °C and shake it in the ultrasonic bath for a while. Stock solution can be stored below -20 °C for several month.

References

1. Xu L, Wang J. Environ Eng Sci. 2013 Jun;30(6):294-301.

Note: This product is for in vitro research use only