

Cytokeratin 18 Polyclonal Antibody

Catalog No: #40824

Package Size: #40824-1 50ul #40824-2 100ul

Orders: order@signalwayantibody.comSupport: tech@signalwayantibody.com

Description

Product Name	Cytokeratin 18 Polyclonal Antibody
Host Species	Rabbit
Clonality	Polyclonal
Purification	The antibody was affinity-purified from rabbit antiserum by affinity-chromatography using epitope-specific immunogen.
Applications	WB IHC IF ELISA
Species Reactivity	Hu Ms Rt
Specificity	Cytokeratin 18 Polyclonal Antibody detects endogenous levels of Cytokeratin 18 protein.
Immunogen Type	peptide
Immunogen Description	Synthesized peptide derived from the C-terminal region of human Cytokeratin 18.
Target Name	Cytokeratin 18
Other Names	KRT18; CYK18; PIG46; Keratin; type I cytoskeletal 18; Cell proliferation-inducing gene 46 protein; Cytokeratin-18; CK-18; Keratin-18; K18
Accession No.	Swiss-Prot: P05783NCBI Gene ID: 3875
Uniprot	P05783
GeneID	3875;
SDS-PAGE MW	46kd
Concentration	1mg/ml
Formulation	Liquid in PBS containing 50% glycerol, 0.5% BSA and 0.02% sodium azide.
Storage	Store at -20°C/1 year

Application Details

Western Blot: 1/500 - 1/2000.

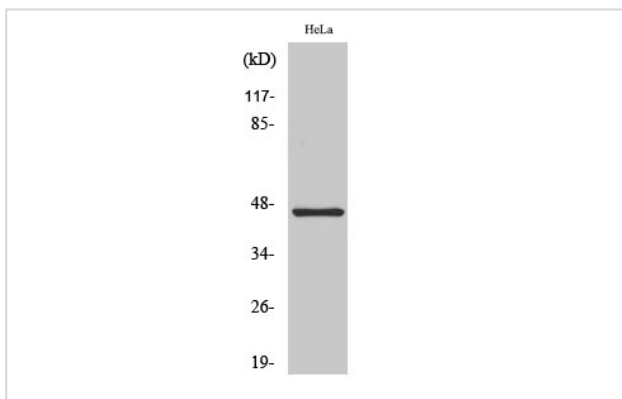
Immunohistochemistry: 1/100 - 1/300.

Immunofluorescence: 1/200 - 1/1000.

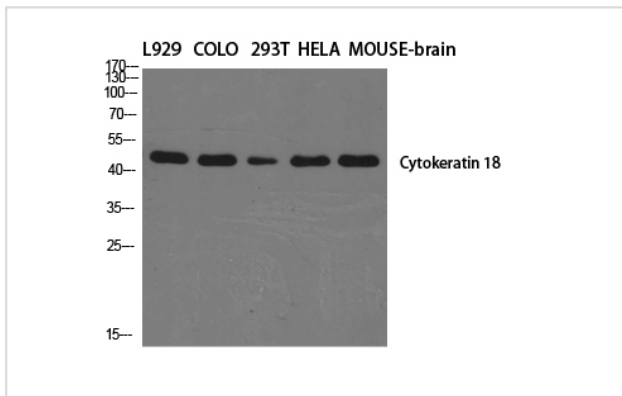
ELISA: 1/10000.

Not yet tested in other applications.

Images



Western Blot analysis of HeLa cells using Cytokeratin 18 Polyclonal Antibody



Western Blot analysis of L929 COLO 293T HELA MOUSE-brain cells using Cytokeratin 18 Polyclonal Antibody

Note: This product is for in vitro research use only