

# Cytokeratin 5 Polyclonal Antibody

Catalog No: #40827

Package Size: #40827-1 50ul #40827-2 100ul

Orders: [order@signalwayantibody.com](mailto:order@signalwayantibody.com)Support: [tech@signalwayantibody.com](mailto:tech@signalwayantibody.com)

## Description

Product Name	Cytokeratin 5 Polyclonal Antibody
Host Species	Rabbit
Clonality	Polyclonal
Purification	The antibody was affinity-purified from rabbit antiserum by affinity-chromatography using epitope-specific immunogen.
Applications	WB IHC IF ELISA
Species Reactivity	Hu Ms Rt
Specificity	Cytokeratin 5 Polyclonal Antibody detects endogenous levels of Cytokeratin 5 protein.
Immunogen Type	peptide
Immunogen Description	Synthesized peptide derived from the C-terminal region of human Cytokeratin 5.
Target Name	Cytokeratin 5
Other Names	KRT5; Keratin; type II cytoskeletal 5; 58 kDa cyokeratin; Cytokeratin-5; CK-5; Keratin-5; K5; Type-II keratin Kb5
Accession No.	Swiss-Prot: P13647NCBI Gene ID: 3852
Uniprot	P13647
GeneID	3852;
SDS-PAGE MW	62kd
Concentration	1mg/ml
Formulation	Liquid in PBS containing 50% glycerol, 0.5% BSA and 0.02% sodium azide.
Storage	Store at -20°C/1 year

## Application Details

Western Blot: 1/500 - 1/2000.

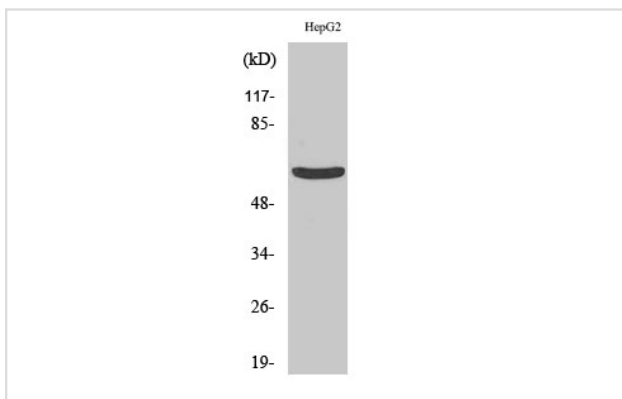
Immunohistochemistry: 1/100 - 1/300.

Immunofluorescence: 1/200 - 1/1000.

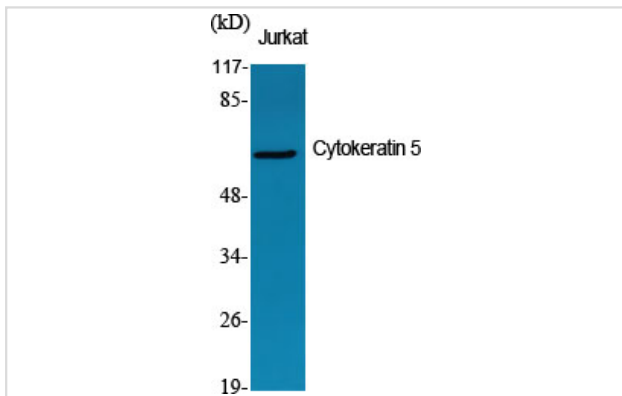
ELISA: 1/10000.

Not yet tested in other applications.

## Images



Western Blot analysis of HepG2 cells using Cytokeratin 5 Polyclonal Antibody



Western Blot analysis of Jurkat cells using Cytokeratin 5 Polyclonal Antibody

---

Note: This product is for in vitro research use only