

## Cytokeratin 7 Polyclonal Antibody

Catalog No: #40828

Package Size: #40828-1 50ul #40828-2 100ul

Orders: [order@signalwayantibody.com](mailto:order@signalwayantibody.com)Support: [tech@signalwayantibody.com](mailto:tech@signalwayantibody.com)

## Description

Product Name	Cytokeratin 7 Polyclonal Antibody
Host Species	Rabbit
Clonality	Polyclonal
Purification	The antibody was affinity-purified from rabbit antiserum by affinity-chromatography using epitope-specific immunogen.
Applications	WB IHC IF ELISA
Species Reactivity	Hu
Specificity	Cytokeratin 7 Polyclonal Antibody detects endogenous levels of Cytokeratin 7 protein.
Immunogen Type	peptide
Immunogen Description	Synthesized peptide derived from the C-terminal region of human Cytokeratin 7.
Target Name	Cytokeratin 7
Other Names	KRT7; SCL; Keratin; type II cytoskeletal 7; Cytokeratin-7; CK-7; Keratin-7; K7; Sarcolectin; Type-II keratin Kb7
Accession No.	Swiss-Prot: P08729NCBI Gene ID: 3855
Uniprot	P08729
GeneID	3855;
SDS-PAGE MW	51kd
Concentration	1mg/ml
Formulation	Liquid in PBS containing 50% glycerol, 0.5% BSA and 0.02% sodium azide.
Storage	Store at -20°C/1 year

## Application Details

Western Blot: 1/500 - 1/2000.

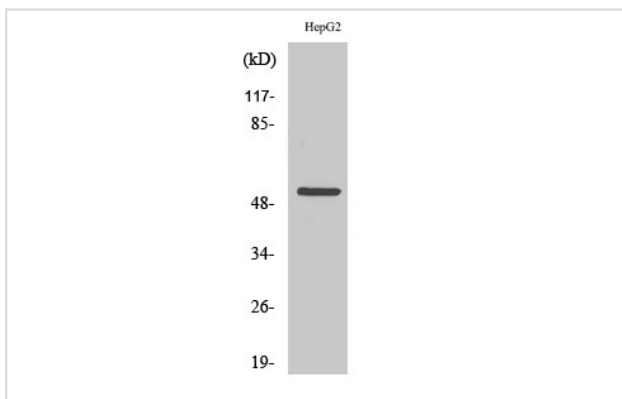
Immunohistochemistry: 1/100 - 1/300.

Immunofluorescence: 1/200 - 1/1000.

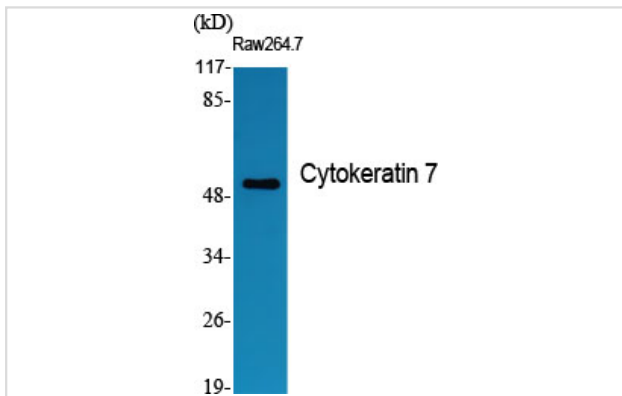
ELISA: 1/40000.

Not yet tested in other applications.

## Images



Western Blot analysis of HepG2 cells using Cytokeratin 7 Polyclonal Antibody



Western Blot analysis of RAE264.7 cells using Cytokeratin 7 Polyclonal Antibody

---

Note: This product is for in vitro research use only