

Cytokeratin 8 Polyclonal Antibody

Catalog No: #40829

Package Size: #40829-1 50ul #40829-2 100ul

Orders: order@signalwayantibody.comSupport: tech@signalwayantibody.com

Description

Product Name	Cytokeratin 8 Polyclonal Antibody
Host Species	Rabbit
Clonality	Polyclonal
Purification	The antibody was affinity-purified from rabbit antiserum by affinity-chromatography using epitope-specific immunogen.
Applications	WB IHC IF ELISA
Species Reactivity	Hu Ms Rt
Specificity	Cytokeratin 8 Polyclonal Antibody detects endogenous levels of Cytokeratin 8 protein.
Immunogen Type	peptide
Immunogen Description	Synthesized peptide derived from human Cytokeratin 8 around the non-phosphorylation site of S432.
Target Name	Cytokeratin 8
Other Names	KRT8; CYK8; Keratin; type II cytoskeletal 8; Cytokeratin-8; CK-8; Keratin-8; K8; Type-II keratin Kb8
Accession No.	Swiss-Prot: P05787NCBI Gene ID: 3856
Uniprot	P05787
GeneID	3856;
SDS-PAGE MW	53kd
Concentration	1mg/ml
Formulation	Liquid in PBS containing 50% glycerol, 0.5% BSA and 0.02% sodium azide.
Storage	Store at -20°C/1 year

Application Details

Western Blot: 1/500 - 1/2000.

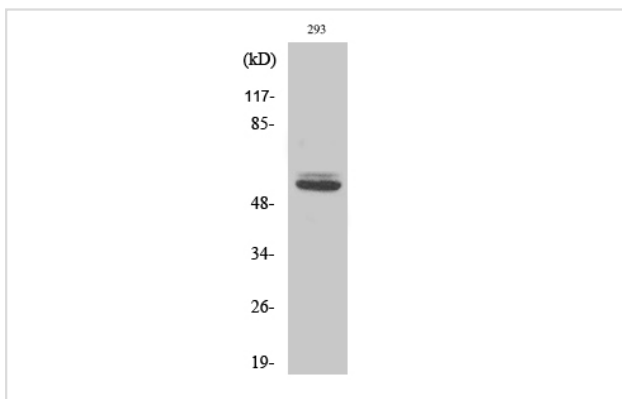
Immunohistochemistry: 1/100 - 1/300.

Immunofluorescence: 1/200 - 1/1000.

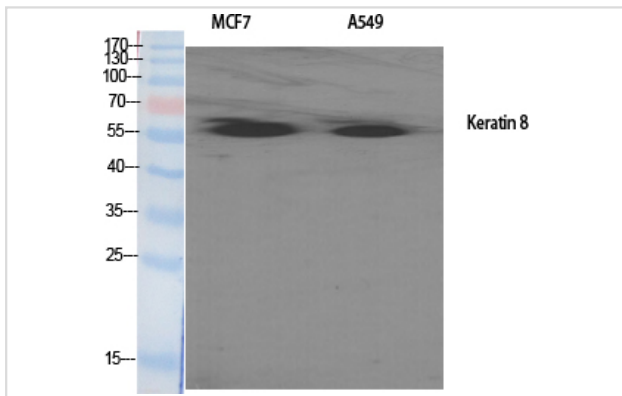
ELISA: 1/5000.

Not yet tested in other applications.

Images



Western Blot analysis of 293 cells using Cytokeratin 8 Polyclonal Antibody



Western Blot analysis of MCF7 A549 cells using Cytokeratin 8 Polyclonal Antibody

Note: This product is for in vitro research use only