

DARPP-32 Polyclonal Antibody

Catalog No: #40833

Package Size: #40833-1 50ul #40833-2 100ul

Orders: order@signalwayantibody.comSupport: tech@signalwayantibody.com

Description

Product Name	DARPP-32 Polyclonal Antibody
Host Species	Rabbit
Clonality	Polyclonal
Purification	The antibody was affinity-purified from rabbit antiserum by affinity-chromatography using epitope-specific immunogen.
Applications	WB IHC ELISA
Species Reactivity	Hu Ms Rt Mk
Specificity	DARPP-32 Polyclonal Antibody detects endogenous levels of DARPP-32 protein.
Immunogen Type	peptide
Immunogen Description	Synthesized peptide derived from human DARPP-32 around the non-phosphorylation site of T34.
Target Name	DARPP-32
Other Names	PPP1R1B; DARPP32; Protein phosphatase 1 regulatory subunit 1B; DARPP-32; Dopamine- and cAMP-regulated neuronal phosphoprotein
Accession No.	Swiss-Prot: Q9UD71NCBI Gene ID: 84152
Uniprot	Q9UD71
GeneID	84152;
SDS-PAGE MW	30kd
Concentration	1mg/ml
Formulation	Liquid in PBS containing 50% glycerol, 0.5% BSA and 0.02% sodium azide.
Storage	Store at -20°C/1 year

Application Details

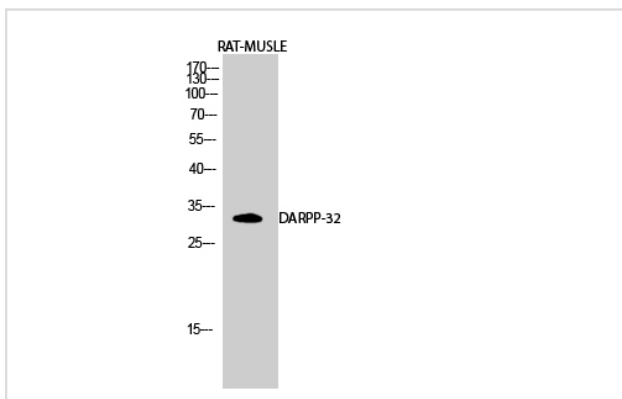
Western Blot: 1/500 - 1/2000.

Immunohistochemistry: 1/100 - 1/300.

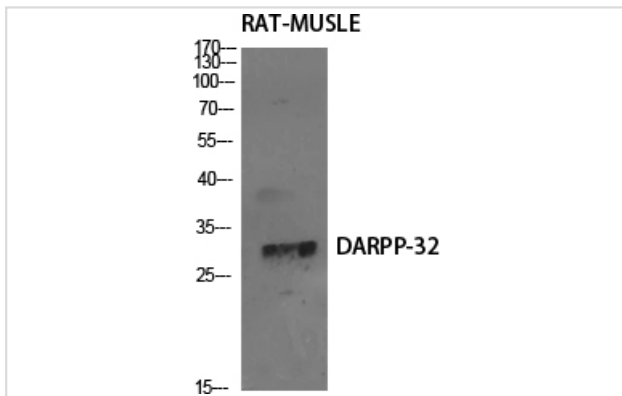
ELISA: 1/20000.

Not yet tested in other applications.

Images



Western Blot analysis of RAT-MUSCLE cells using DARPP-32 Polyclonal Antibody



Western Blot analysis of RAT-MUSCLE cells using DARPP-32 Polyclonal Antibody

Note: This product is for in vitro research use only