

## R-(+)-Lansoprazole

Catalog No: #S1021

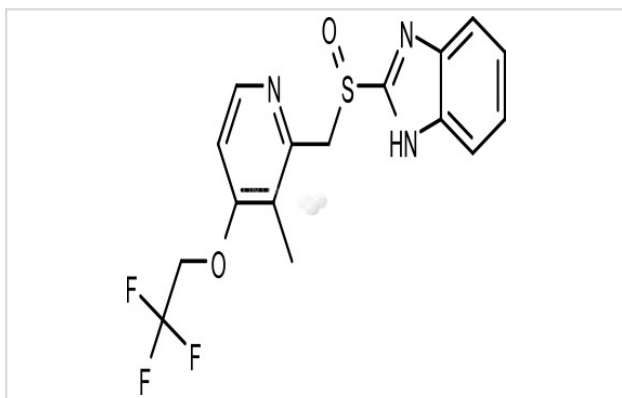
Orders: order@signalwayantibody.com

Support: tech@signalwayantibody.com

## Description

Product Name	R-(+)-Lansoprazole
Brief Description	Inhibitors
Purification	98.09%
Target Name	Proton pump inhibitor
Calculated MW	369.36
Formulation	C16H14F3N3O2S
Storage	3 years -20°C powder;2 years -80°C in solvent;

## Images



## Product Description

Research Area:Metabolism systemSMILES:CC1=C(C=CN=C1C[S@@](=O)C2=NC3=CC=CC=C3N2)OCC(F)(F)FPathways:Membrane transporter/Ion channelReceptor:Proton pumpBoiling pt:Melting pt:66-68CSolubility:Water: 74 mg/mL (200.34 mM); DMSO: 74 mg/mL (200.34 mM)Appearance:White PowderRemark:For obtaining a higher solubility , please warm the tube at 37 °C and shake it in the ultrasonic bath for a while.Stock solution can be stored below -20 °C for several month.

## References

1. Metz DC, et al. Aliment Pharmacol Ther, 2009, 29(9), 928-937.

Note: This product is for in vitro research use only