

## Luteolin

Catalog No: #S1027

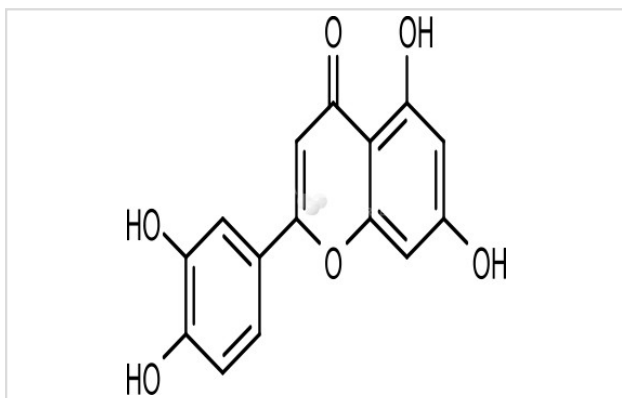
Orders: order@signalwayantibody.com

Support: tech@signalwayantibody.com

## Description

Product Name	Luteolin
Brief Description	Inhibitors
Purification	96.61%
Target Name	PDE inhibitor
Calculated MW	286.24
Formulation	C15H10O6
Storage	3 years -20°C powder;2 years -80°C in solvent;

## Images



## Product Description

Research Area:Respiratory systemSMILES:OC1=CC(O)=C2C(=O)C=C(OC2=C1)C1=CC(O)=C(O)C=C1Pathways:MetabolismReceptor:PDE1; PDE2; PDE3; PDE4; PDE5Boiling pt:616.1C?Melting pt:330CSolubility:Ethanol: 3 mg/mL warmed (10.48 mM); DMSO: 57 mg/mL (199.13 mM)Appearance:Yellow PowderRemark:For obtaining a higher solubility , please warm the tube at 37 °C and shake it in the ultrasonic bath for a while.Stock solution can be stored below -20 °C for several month.

## References

1. Yu MC, et al. Eur J Pharmacol, 2010, 627(1-3), 269-275.

Note: This product is for in vitro research use only