

DDX55 Polyclonal Antibody

Catalog No: #40837

Package Size: #40837-1 50ul #40837-2 100ul

Orders: order@signalwayantibody.com

Support: tech@signalwayantibody.com

Description

Product Name	DDX55 Polyclonal Antibody
Host Species	Rabbit
Clonality	Polyclonal
Purification	The antibody was affinity-purified from rabbit antiserum by affinity-chromatography using epitope-specific immunogen.
Applications	WB IHC ELISA
Species Reactivity	Hu Ms
Specificity	DDX55 Polyclonal Antibody detects endogenous levels of DDX55 protein.
Immunogen Type	peptide
Immunogen Description	Synthesized peptide derived from the Internal region of human DDX55.
Target Name	DDX55
Other Names	DDX55; KIAA1595; ATP-dependent RNA helicase DDX55; DEAD box protein 55
Accession No.	Swiss-Prot: Q8NHQ9NCBI Gene ID: 57696
Uniprot	Q8NHQ9
GeneID	57696;
SDS-PAGE MW	68kd
Concentration	1mg/ml
Formulation	Liquid in PBS containing 50% glycerol, 0.5% BSA and 0.02% sodium azide.
Storage	Store at -20°C/1 year

Application Details

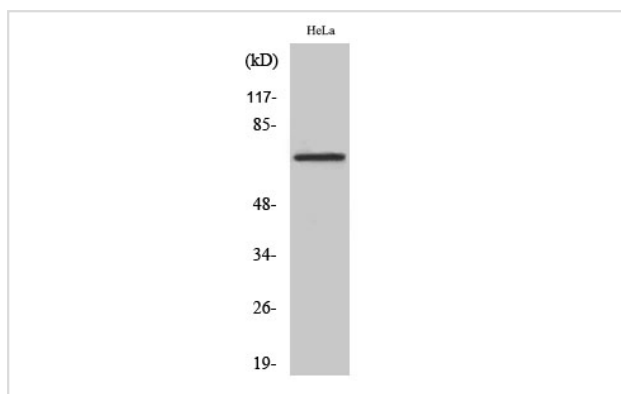
Western Blot: 1/500 - 1/2000.

Immunohistochemistry: 1/100 - 1/300.

ELISA: 1/40000.

Not yet tested in other applications.

Images



Western Blot analysis of HeLa cells using DDX55 Polyclonal Antibody

Note: This product is for in vitro research use only