

## Desmin Polyclonal Antibody

Catalog No: #40839

Package Size: #40839-1 50ul #40839-2 100ul

Orders: [order@signalwayantibody.com](mailto:order@signalwayantibody.com)Support: [tech@signalwayantibody.com](mailto:tech@signalwayantibody.com)

## Description

Product Name	Desmin Polyclonal Antibody
Host Species	Rabbit
Clonality	Polyclonal
Purification	The antibody was affinity-purified from rabbit antiserum by affinity-chromatography using epitope-specific immunogen.
Applications	WB IHC IF ELISA
Species Reactivity	Hu Ms Rt
Specificity	Desmin Polyclonal Antibody detects endogenous levels of Desmin protein.
Immunogen Type	peptide
Immunogen Description	Synthesized peptide derived from the C-terminal region of human Desmin.
Target Name	Desmin
Other Names	DES; Desmin
Accession No.	Swiss-Prot: P17661NCBI Gene ID: 1674
Uniprot	P17661
GeneID	1674;
SDS-PAGE MW	55kd
Concentration	1mg/ml
Formulation	Liquid in PBS containing 50% glycerol, 0.5% BSA and 0.02% sodium azide.
Storage	Store at -20°C/1 year

## Application Details

Western Blot: 1/500 - 1/2000.

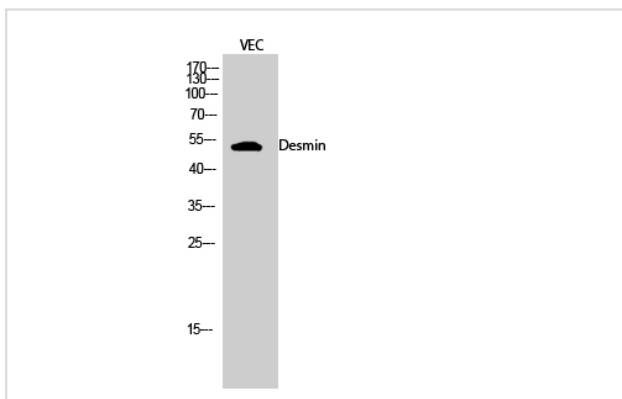
Immunohistochemistry: 1/100 - 1/300.

Immunofluorescence: 1/200 - 1/1000.

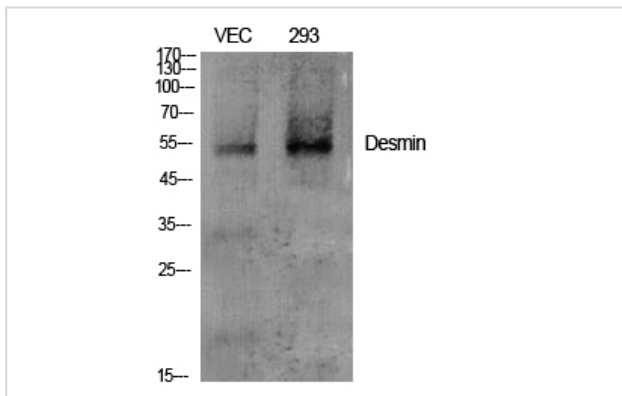
ELISA: 1/10000.

Not yet tested in other applications.

## Images



Western Blot analysis of VEC cells using Desmin Polyclonal Antibody



Western Blot analysis of VEC 293 cells using Desmin Polyclonal Antibody

---

Note: This product is for in vitro research use only