

## Penfluridol

Catalog No: #S1105

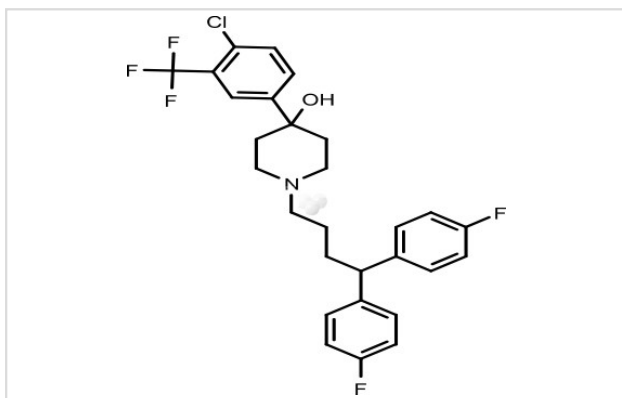
Orders: order@signalwayantibody.com

Support: tech@signalwayantibody.com

## Description

Product Name	Penfluridol
Brief Description	Inhibitors
Purification	98.00%
Target Name	Dopamine Receptor antagonist
Calculated MW	523.97
Formulation	C28H27ClF5NO
Storage	3 years -20°C powder; 2 years -80°C in solvent;

## Images



## Product Description

Research Area: Nervous

system SMILES: OC1(CCN(CCCC(C2=CC=C(F)C=C2)C2=CC=C(F)C=C2)CC1)C1=CC(=C(Cl)C=C1)C(F)(F)F Pathways: GPCR/G Protein;

Neuroscience Receptor: Dopamine  
 Boiling pt: 587.7°C  
 Melting pt: 105-107°C  
 Solubility: Ethanol: 100 mg/mL (190.85 mM); DMSO: 100 mg/mL (190.85 mM)  
 Appearance: White Powder  
 Remark: For obtaining a higher solubility, please warm the tube at 37 °C and shake it in the ultrasonic bath for a while. Stock solution can be stored below -20 °C for several months.

## References

1. Creese I, et al. Science, 1976, 192(4238), 481-483.

Note: This product is for in vitro research use only