

DNA pol δ 3 Polyclonal Antibody

Catalog No: #40845

Package Size: #40845-1 50ul #40845-2 100ul

Orders: order@signalwayantibody.comSupport: tech@signalwayantibody.com

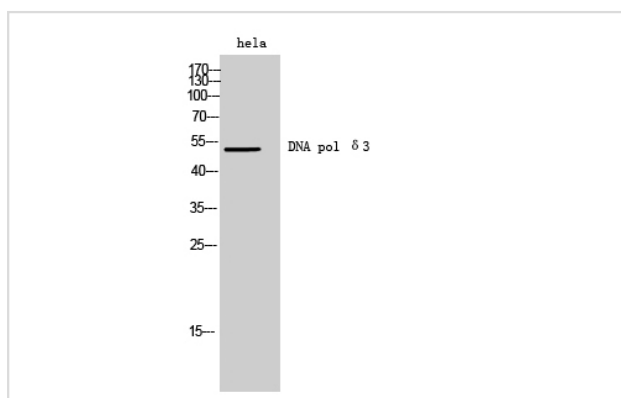
Description

Product Name	DNA pol δ 3 Polyclonal Antibody
Host Species	Rabbit
Clonality	Polyclonal
Purification	The antibody was affinity-purified from rabbit antiserum by affinity-chromatography using epitope-specific immunogen.
Applications	WB
Species Reactivity	Hu Ms Rt
Specificity	DNA pol δ 3 Polyclonal Antibody detects endogenous levels of DNA pol δ 3 protein.
Immunogen Type	peptide
Immunogen Description	Synthesized peptide derived from the C-terminal region of human DNA pol δ 3.
Target Name	DNA pol δ 3
Other Names	POLD3; KIAA0039; DNA polymerase delta subunit 3; DNA polymerase delta subunit p66
Accession No.	Swiss-Prot: Q15054NCBI Gene ID: 10714
Uniprot	Q15054
GeneID	10714;
SDS-PAGE MW	51kd
Concentration	1mg/ml
Formulation	Liquid in PBS containing 50% glycerol, 0.5% BSA and 0.02% sodium azide.
Storage	Store at -20°C/1 year

Application Details

Western Blot: 1/500 - 1/2000.

Images



Western Blot analysis of hela cells using DNA pol δ 3 Polyclonal Antibody

Note: This product is for in vitro research use only