

## Dok-5 Polyclonal Antibody

Catalog No: #40850

Package Size: #40850-1 50ul #40850-2 100ul

Orders: order@signalwayantibody.com

Support: tech@signalwayantibody.com

## Description

Product Name	Dok-5 Polyclonal Antibody
Host Species	Rabbit
Clonality	Polyclonal
Purification	The antibody was affinity-purified from rabbit antiserum by affinity-chromatography using epitope-specific immunogen.
Applications	WB ELISA
Species Reactivity	Hu Ms
Specificity	Dok-5 Polyclonal Antibody detects endogenous levels of Dok-5 protein.
Immunogen Type	peptide
Immunogen Description	Synthesized peptide derived from the Internal region of human Dok-5.
Target Name	Dok-5
Other Names	DOK5; C20orf180; Docking protein 5; Downstream of tyrosine kinase 5; Insulin receptor substrate 6; IRS-6; IRS6
Accession No.	Swiss-Prot: Q9P104NCBI Gene ID: 55816
Uniprot	Q9P104
GeneID	55816;
SDS-PAGE MW	36kd
Concentration	1mg/ml
Formulation	Liquid in PBS containing 50% glycerol, 0.5% BSA and 0.02% sodium azide.
Storage	Store at -20°C/1 year

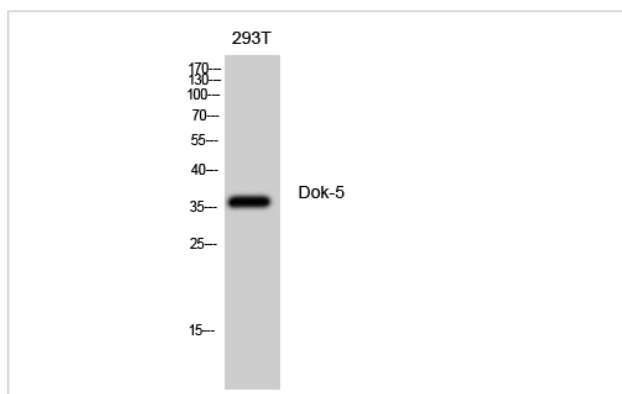
## Application Details

Western Blot: 1/500 - 1/2000.

ELISA: 1/20000.

Not yet tested in other applications.

## Images



Western Blot analysis of 293T cells using Dok-5 Polyclonal Antibody

---

Note: This product is for in vitro research use only