

# Doublecortin Polyclonal Antibody

Catalog No: #40851

Package Size: #40851-1 50ul #40851-2 100ul

Orders: [order@signalwayantibody.com](mailto:order@signalwayantibody.com)Support: [tech@signalwayantibody.com](mailto:tech@signalwayantibody.com)

## Description

Product Name	Doublecortin Polyclonal Antibody
Host Species	Rabbit
Clonality	Polyclonal
Purification	The antibody was affinity-purified from rabbit antiserum by affinity-chromatography using epitope-specific immunogen.
Applications	WB IHC ELISA
Species Reactivity	Hu Ms Rt
Specificity	Doublecortin Polyclonal Antibody detects endogenous levels of Doublecortin protein.
Immunogen Type	peptide
Immunogen Description	Synthesized peptide derived from human Doublecortin around the non-phosphorylation site of S378.
Target Name	Doublecortin
Other Names	DCX; DBCN; LISX; Neuronal migration protein doublecortin; Dublin; Lissencephalin-X; Lis-X
Accession No.	Swiss-Prot: O43602NCBI Gene ID: 1641
Uniprot	O43602
GeneID	1641;
SDS-PAGE MW	44kd
Concentration	1mg/ml
Formulation	Liquid in PBS containing 50% glycerol, 0.5% BSA and 0.02% sodium azide.
Storage	Store at -20°C/1 year

## Application Details

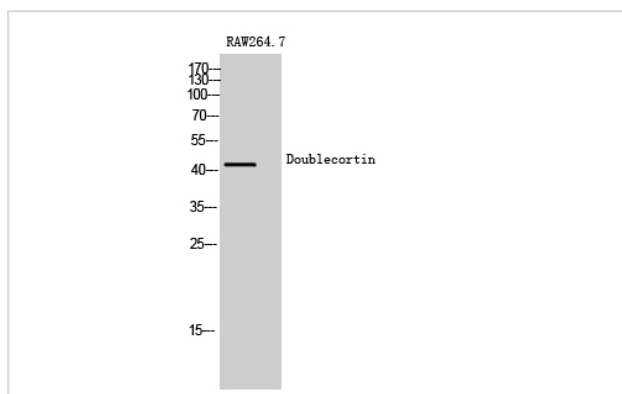
Western Blot: 1/500 - 1/2000.

Immunohistochemistry: 1/100 - 1/300.

ELISA: 1/10000.

Not yet tested in other applications.

## Images



Western Blot analysis of RAW264.7 cells using Doublecortin Polyclonal Antibody

---

Note: This product is for in vitro research use only