

Bromopride

Catalog No: #S1175

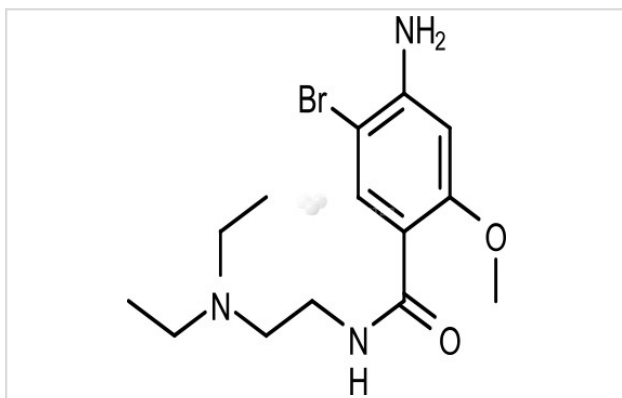
Orders: order@signalwayantibody.com

Support: tech@signalwayantibody.com

Description

Product Name	Bromopride
Brief Description	Inhibitors
Purification	99.93%
Target Name	Dopamine Receptor antagonist
Calculated MW	344.25
Formulation	C ₁₄ H ₂₂ BrN ₃ O ₂
Storage	3 years -20°C powder; 2 years -80°C in solvent;

Images



Product Description

Research Area: Nervous system SMILES: CCN(CC)CCNC(=O)C1=CC(Br)=C(N)C=C1OC Pathways: GPCR/G Protein;

Neuroscience Receptor: Dopamine Boiling pt: 435.8°C Melting pt: 48-150°C Solubility: DMSO: 10 mM Appearance: White Powder Remark: For obtaining a higher solubility, please warm the tube at 37 °C and shake it in the ultrasonic bath for a while. Stock solution can be stored below -20 °C for several months.

References

1. Tonini M, et al. Aliment Pharmacol Ther. 2004 Feb 15;19(4):379-90.

Note: This product is for in vitro research use only