

## DREAM Polyclonal Antibody

Catalog No: #40852

Package Size: #40852-1 50ul #40852-2 100ul

Orders: [order@signalwayantibody.com](mailto:order@signalwayantibody.com)Support: [tech@signalwayantibody.com](mailto:tech@signalwayantibody.com)

## Description

Product Name	DREAM Polyclonal Antibody
Host Species	Rabbit
Clonality	Polyclonal
Purification	The antibody was affinity-purified from rabbit antiserum by affinity-chromatography using epitope-specific immunogen.
Applications	WB IHC IF ELISA
Species Reactivity	Hu Ms
Specificity	DREAM Polyclonal Antibody detects endogenous levels of DREAM protein.
Immunogen Type	peptide
Immunogen Description	Synthesized peptide derived from human DREAM around the non-phosphorylation site of S63.
Target Name	DREAM
Other Names	KCNIP3; CSEN; DREAM; KCHIP3; Calsenilin; A-type potassium channel modulatory protein 3; DRE-antagonist modulator; DREAM; Kv channel-interacting protein 3; KChIP3
Accession No.	Swiss-Prot: Q9Y2W7NCBI Gene ID: 30818
Uniprot	Q9Y2W7
GeneID	30818;
SDS-PAGE MW	29kd
Concentration	1mg/ml
Formulation	Liquid in PBS containing 50% glycerol, 0.5% BSA and 0.02% sodium azide.
Storage	Store at -20°C/1 year

## Application Details

Western Blot: 1/500 - 1/2000.

Immunohistochemistry: 1/100 - 1/300.

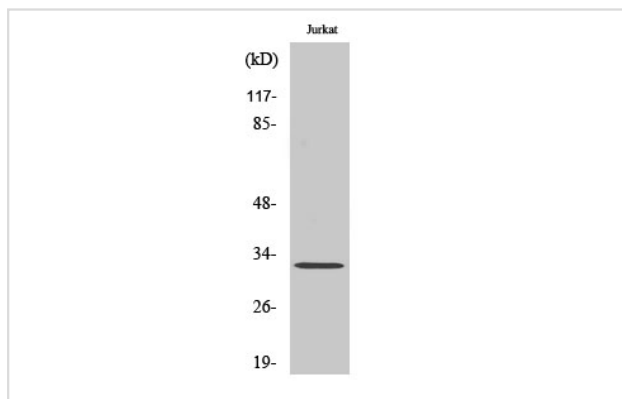
Immunofluorescence: 1/200 - 1/1000.

ELISA: 1/20000.

Not yet tested in other applications.

## Images

Western Blot analysis of MCF7 cells using DREAM Polyclonal Antibody



Note: This product is for in vitro research use only