

Sulpiride

Catalog No: #S1201

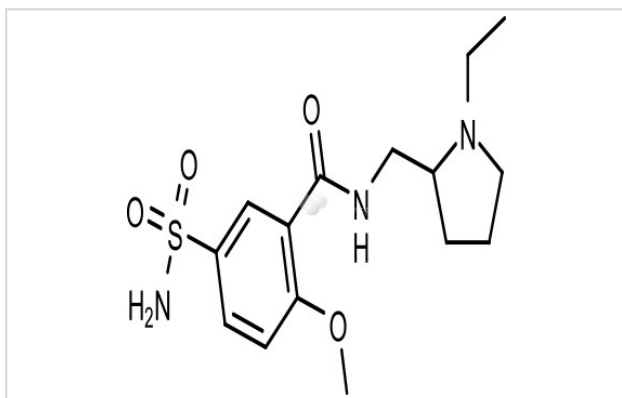
Orders: order@signalwayantibody.com

Support: tech@signalwayantibody.com

Description

Product Name	Sulpiride
Brief Description	Inhibitors
Purification	98.00%
Target Name	Dopamine Receptor antagonist
Calculated MW	341.43
Formulation	C15H23N3O4S
Storage	3 years -20°C powder; 2 years -80°C in solvent;

Images



Product Description

Research Area: Nervous system SMILES: CCN1CCCC1CNC(=O)C1=C(OC)C=CC(=C1)S(N)(=O)=O Pathways: GPCR/G Protein;

Neuroscience Receptor: Dopamine Boiling pt: Melting pt: 180-185°C Solubility: Soluble in DMSO Appearance: White Powder Remark: For obtaining a higher solubility, please warm the tube at 37 °C and shake it in the ultrasonic bath for a while. Stock solution can be stored below -20 °C for several months.

References

1. Saporito F, et al. Int J Cardiol. 2014 Aug 1;175(2):383-4.

Note: This product is for in vitro research use only