

DSCR 1 Polyclonal Antibody

Catalog No: #40854

Package Size: #40854-1 50ul #40854-2 100ul

Orders: order@signalwayantibody.comSupport: tech@signalwayantibody.com

Description

Product Name	DSCR 1 Polyclonal Antibody
Host Species	Rabbit
Clonality	Polyclonal
Purification	The antibody was affinity-purified from rabbit antiserum by affinity-chromatography using epitope-specific immunogen.
Applications	WB ELISA
Species Reactivity	Hu Ms Rt
Specificity	DSCR 1 Polyclonal Antibody detects endogenous levels of DSCR 1 protein.
Immunogen Type	peptide
Immunogen Description	Synthesized peptide derived from the C-terminal region of human DSCR 1.
Target Name	DSCR 1
Other Names	RCAN1; ADAPT78; CSP1; DSC1; DSCR1; Calcipressin-1; Adapt78; Down syndrome critical region protein 1; Myocyte-enriched calcineurin-interacting protein 1; MCIP1; Regulator of calcineurin 1
Accession No.	Swiss-Prot: P53805NCBI Gene ID: 1827
Uniprot	P53805
GeneID	1827;
SDS-PAGE MW	22kd
Concentration	1mg/ml
Formulation	Liquid in PBS containing 50% glycerol, 0.5% BSA and 0.02% sodium azide.
Storage	Store at -20°C/1 year

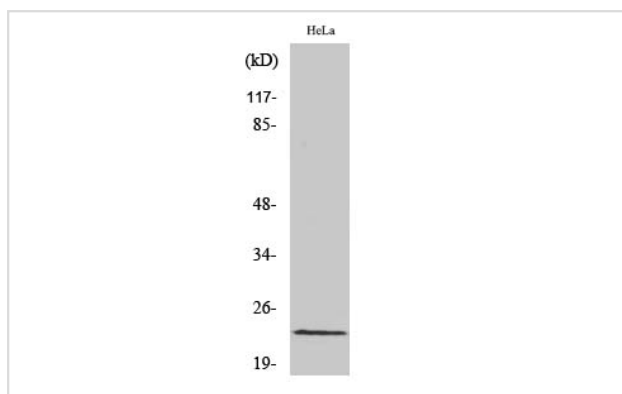
Application Details

Western Blot: 1/500 - 1/2000.

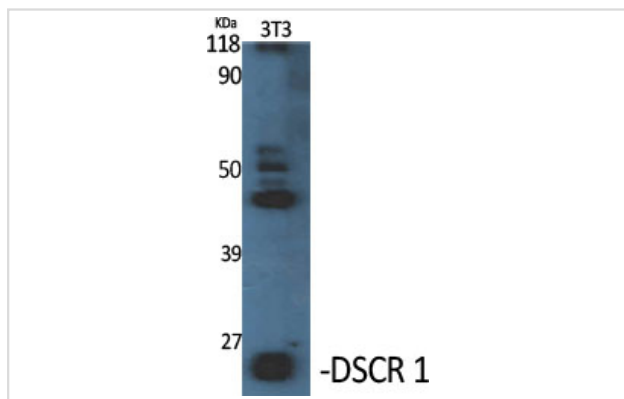
ELISA: 1/10000.

Not yet tested in other applications.

Images



Western Blot analysis of HeLa cells using DSCR 1 Polyclonal Antibody



Western Blot analysis of NIH-3T3 cells using DSCR 1 Polyclonal Antibody

Note: This product is for in vitro research use only