

EDG-2 Polyclonal Antibody

Catalog No: #40861

Package Size: #40861-1 50ul #40861-2 100ul

Orders: order@signalwayantibody.comSupport: tech@signalwayantibody.com

Description

Product Name	EDG-2 Polyclonal Antibody
Host Species	Rabbit
Clonality	Polyclonal
Purification	The antibody was affinity-purified from rabbit antiserum by affinity-chromatography using epitope-specific immunogen.
Applications	WB IHC IF ELISA
Species Reactivity	Hu Rt
Specificity	EDG-2 Polyclonal Antibody detects endogenous levels of EDG-2 protein.
Immunogen Type	peptide
Immunogen Description	Synthesized peptide derived from the N-terminal region of human EDG-2.
Target Name	EDG-2
Other Names	LPAR1; EDG2; LPA1; Lysophosphatidic acid receptor 1; LPA receptor 1; LPA-1; Lysophosphatidic acid receptor Edg-2
Accession No.	Swiss-Prot: Q92633NCBI Gene ID: 1902
Uniprot	Q92633
GeneID	1902;
SDS-PAGE MW	38kd
Concentration	1mg/ml
Formulation	Liquid in PBS containing 50% glycerol, 0.5% BSA and 0.02% sodium azide.
Storage	Store at -20°C/1 year

Application Details

Western Blot: 1/500 - 1/2000.

Immunohistochemistry: 1/100 - 1/300.

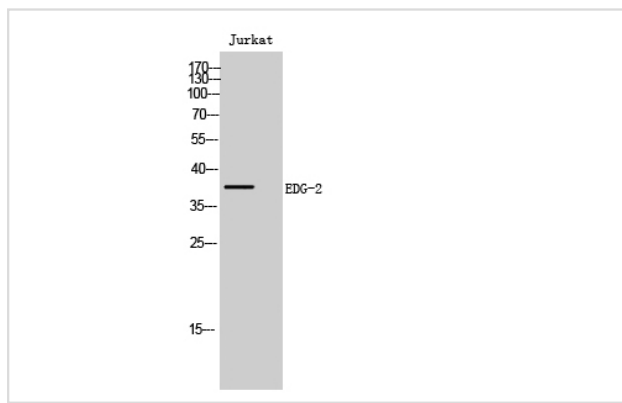
Immunofluorescence: 1/200 - 1/1000.

ELISA: 1/5000.

Not yet tested in other applications.

Images

Western Blot analysis of Jurkat cells using EDG-2 Polyclonal Antibody



Note: This product is for in vitro research use only