

eEF2K Polyclonal Antibody

Catalog No: #40862

Package Size: #40862-1 50ul #40862-2 100ul

Orders: order@signalwayantibody.comSupport: tech@signalwayantibody.com

Description

Product Name	eEF2K Polyclonal Antibody
Host Species	Rabbit
Clonality	Polyclonal
Purification	The antibody was affinity-purified from rabbit antiserum by affinity-chromatography using epitope-specific immunogen.
Applications	WB IHC ELISA
Species Reactivity	Hu Rt
Specificity	eEF2K Polyclonal Antibody detects endogenous levels of eEF2K protein.
Immunogen Type	peptide
Immunogen Description	Synthesized peptide derived from human eEF2K around the non-phosphorylation site of S366.
Target Name	eEF2K
Other Names	EEF2K; Eukaryotic elongation factor 2 kinase; eEF-2 kinase; eEF-2K; Calcium/calmodulin-dependent eukaryotic elongation factor 2 kinase
Accession No.	Swiss-Prot: O00418NCBI Gene ID: 29904
Uniprot	O00418
GeneID	29904;
SDS-PAGE MW	105kd
Concentration	1mg/ml
Formulation	Liquid in PBS containing 50% glycerol, 0.5% BSA and 0.02% sodium azide.
Storage	Store at -20°C/1 year

Application Details

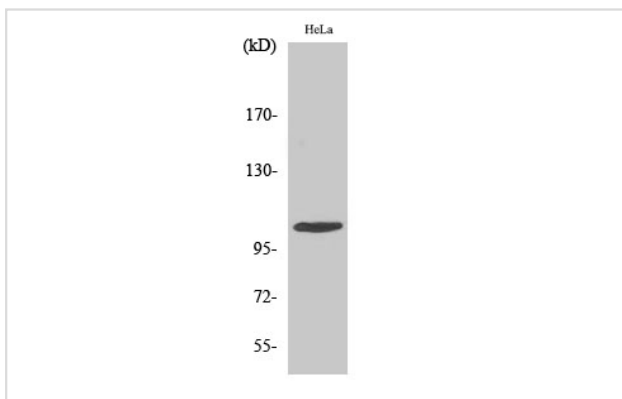
Western Blot: 1/500 - 1/2000.

Immunohistochemistry: 1/100 - 1/300.

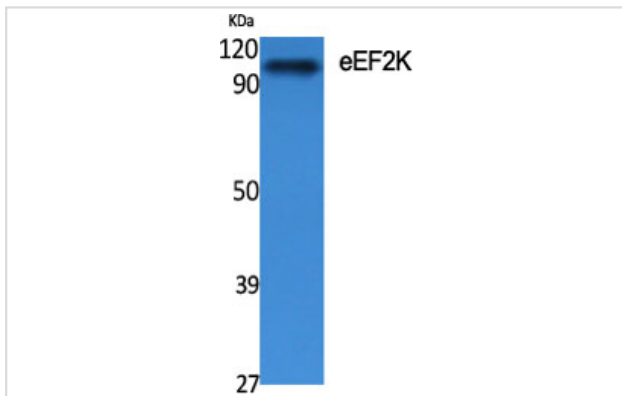
ELISA: 1/20000.

Not yet tested in other applications.

Images



Western Blot analysis of HeLa cells using eEF2K Polyclonal Antibody



Western Blot analysis of various cells using eEF2K Polyclonal Antibody

Note: This product is for in vitro research use only