

## EF-2 Polyclonal Antibody

Catalog No: #40864

Package Size: #40864-1 50ul #40864-2 100ul

Orders: [order@signalwayantibody.com](mailto:order@signalwayantibody.com)Support: [tech@signalwayantibody.com](mailto:tech@signalwayantibody.com)

## Description

Product Name	EF-2 Polyclonal Antibody
Host Species	Rabbit
Clonality	Polyclonal
Purification	The antibody was affinity-purified from rabbit antiserum by affinity-chromatography using epitope-specific immunogen.
Applications	WB IHC IF ELISA
Species Reactivity	Hu Ms Rt
Specificity	EF-2 Polyclonal Antibody detects endogenous levels of EF-2 protein.
Immunogen Type	peptide
Immunogen Description	Synthesized peptide derived from human EF-2 around the non-phosphorylation site of T56.
Target Name	EF-2
Other Names	EEF2; EF2; Elongation factor 2; EF-2
Accession No.	Swiss-Prot: P13639NCBI Gene ID: 1938
Uniprot	P13639
GeneID	1938;
SDS-PAGE MW	100kd
Concentration	1mg/ml
Formulation	Liquid in PBS containing 50% glycerol, 0.5% BSA and 0.02% sodium azide.
Storage	Store at -20°C/1 year

## Application Details

Western Blot: 1/500 - 1/2000.

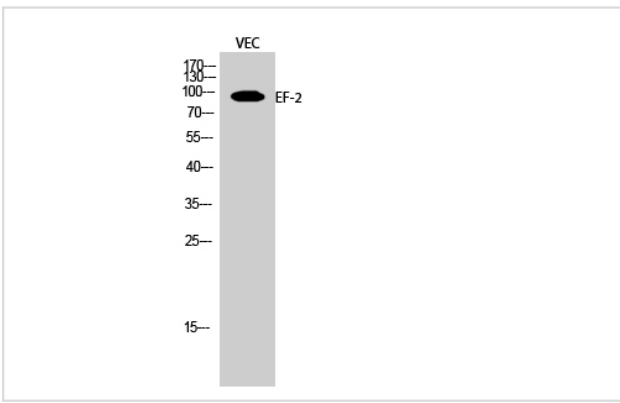
Immunohistochemistry: 1/100 - 1/300.

Immunofluorescence: 1/200 - 1/1000.

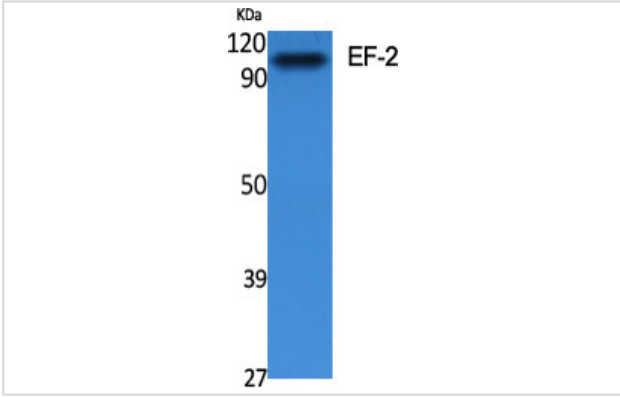
ELISA: 1/5000.

Not yet tested in other applications.

## Images



Western Blot analysis of VEC cells using EF-2 Polyclonal Antibody



Western Blot analysis of various cells using EF-2 Polyclonal Antibody

---

Note: This product is for in vitro research use only