

## EGFR Polyclonal Antibody

Catalog No: #40868

Package Size: #40868-1 50ul #40868-2 100ul

Orders: [order@signalwayantibody.com](mailto:order@signalwayantibody.com)Support: [tech@signalwayantibody.com](mailto:tech@signalwayantibody.com)

## Description

|                       |   |
|-----------------------|---|
| Product Name          | EGFR Polyclonal Antibody  |
| Host Species          | Rabbit  |
| Clonality             | Polyclonal  |
| Purification          | The antibody was affinity-purified from rabbit antiserum by affinity-chromatography using epitope-specific immunogen.       |
| Applications          | WB IHC IF ELISA   |
| Species Reactivity    | Hu Ms Rt  |
| Specificity           | EGFR Polyclonal Antibody detects endogenous levels of EGFR protein.   |
| Immunogen Type        | peptide   |
| Immunogen Description | Synthesized peptide derived from human EGFR around the non-phosphorylation site of Y869.                                    |
| Target Name           | EGFR  |
| Other Names           | EGFR; ERBB; ERBB1; HER1; Epidermal growth factor receptor; Proto-oncogene c-ErbB-1; Receptor tyrosine-protein kinase erbB-1 |
| Accession No.         | Swiss-Prot: P00533NCBI Gene ID: 1956  |
| Uniprot               | P00533  |
| GeneID                | 1956;   |
| SDS-PAGE MW           | 140kd   |
| Concentration         | 1mg/ml  |
| Formulation           | Liquid in PBS containing 50% glycerol, 0.5% BSA and 0.02% sodium azide.   |
| Storage               | Store at -20°C/1 year   |

## Application Details

Western Blot: 1/500 - 1/2000.

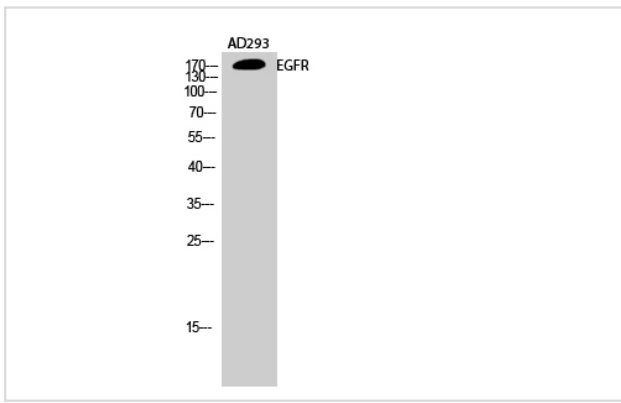
Immunohistochemistry: 1/100 - 1/300.

Immunofluorescence: 1/200 - 1/1000.

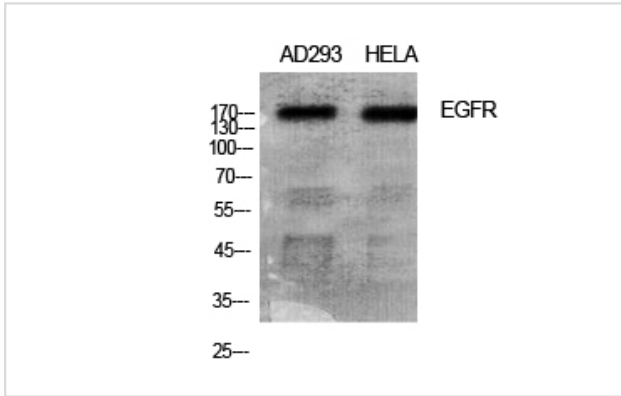
ELISA: 1/10000.

Not yet tested in other applications.

## Images



Western Blot analysis of AD293 cells using EGFR Polyclonal Antibody



Western Blot analysis of AD293 HELA cells using EGFR Polyclonal Antibody

---

Note: This product is for in vitro research use only