

eIF4E3 Polyclonal Antibody

Catalog No: #40872

Package Size: #40872-1 50ul #40872-2 100ul

Orders: order@signalwayantibody.com

Support: tech@signalwayantibody.com

Description

Product Name	eIF4E3 Polyclonal Antibody
Host Species	Rabbit
Clonality	Polyclonal
Purification	The antibody was affinity-purified from rabbit antiserum by affinity-chromatography using epitope-specific immunogen.
Applications	WB ELISA
Species Reactivity	Hu Ms Rt
Specificity	eIF4E3 Polyclonal Antibody detects endogenous levels of eIF4E3 protein.
Immunogen Type	peptide
Immunogen Description	Synthesized peptide derived from the Internal region of human eIF4E3.
Target Name	eIF4E3
Other Names	EIF4E3; Eukaryotic translation initiation factor 4E type 3; eIF-4E type 3; eIF-4E3; eIF4E type 3; eIF4E-3
Accession No.	Swiss-Prot: Q8N5X7NCBI Gene ID: 317649
Uniprot	Q8N5X7
GeneID	317649;
SDS-PAGE MW	24kd
Concentration	1mg/ml
Formulation	Liquid in PBS containing 50% glycerol, 0.5% BSA and 0.02% sodium azide.
Storage	Store at -20°C/1 year

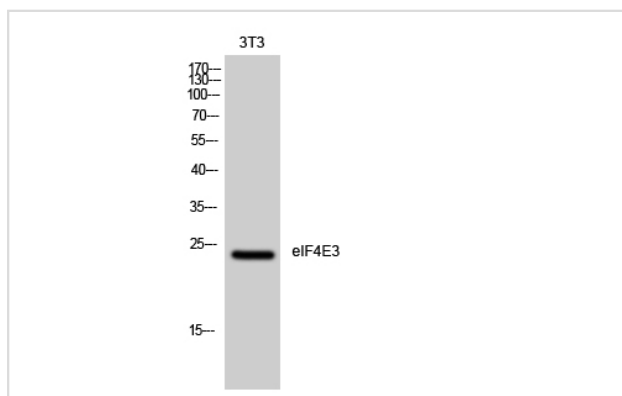
Application Details

Western Blot: 1/500 - 1/2000.

ELISA: 1/10000.

Not yet tested in other applications.

Images



Western Blot analysis of 3T3 cells using eIF4E3 Polyclonal Antibody

Note: This product is for in vitro research use only