

Nilvadipine

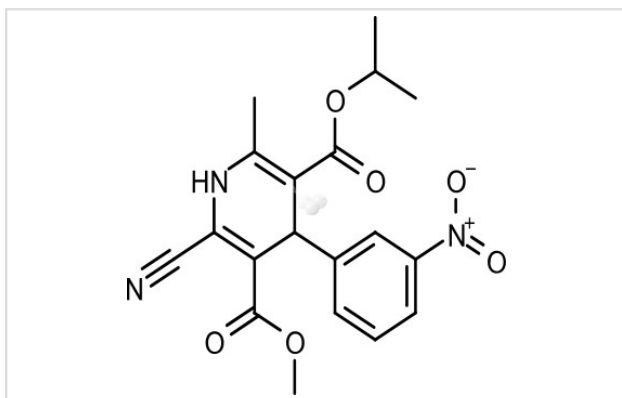
Catalog No: #S1422

Orders: order@signalwayantibody.comSupport: tech@signalwayantibody.com

Description

| | |
|-------------------|---|
| Product Name | Nilvadipine |
| Brief Description | Inhibitors |
| Purification | 98.00% |
| Target Name | Calcium Channel inhibitor |
| Calculated MW | 385.38 |
| Formulation | C19H19N3O6 |
| Storage | 3 years -20°C powder; 2 years -80°C in solvent; |

Images



Product Description

Research Area: Cardiovascular System
 SMILES: COC(=O)C1=C(NC(C)=C(C1C1=CC(=CC=C1)[N+](O)=O)C(=O)OC(C)C)C#N
 Pathways: Membrane transporter/Ion channel
 Receptor: Calcium Channel
 Boiling pt: 526.7°C
 Melting pt: 148-150°C
 Solubility: Ethanol: 33 mg/mL (85.63 mM); DMSO: 77 mg/mL (199.8 mM)
 Appearance: Yellow Powder
 Remark: For obtaining a higher solubility, please warm the tube at 37 °C and shake it in the ultrasonic bath for a while. Stock solution can be stored below -20 °C for several month.

References

1. Nomoto A, et al. Atherosclerosis, 1988, 72(2-3), 213-219.

Note: This product is for in vitro research use only