

ELOVL4 Polyclonal Antibody

Catalog No: #40878

Package Size: #40878-1 50ul #40878-2 100ul

Orders: order@signalwayantibody.com

Support: tech@signalwayantibody.com

Description

| | |
|-----------------------|------------------------------------------------------------------------------------------------------------------------------------------------|
| Product Name | ELOVL4 Polyclonal Antibody |
| Host Species | Rabbit |
| Clonality | Polyclonal |
| Purification | The antibody was affinity-purified from rabbit antiserum by affinity-chromatography using epitope-specific immunogen. |
| Applications | WB ELISA |
| Species Reactivity | Hu Ms |
| Specificity | ELOVL4 Polyclonal Antibody detects endogenous levels of ELOVL4 protein. |
| Immunogen Type | peptide |
| Immunogen Description | Synthesized peptide derived from the Internal region of human ELOVL4. |
| Target Name | ELOVL4 |
| Other Names | ELOVL4; Elongation of very long chain fatty acids protein 4; 3-keto acyl-CoA synthase ELOVL4; ELOVL fatty acid elongase 4; ELOVL FA elongase 4 |
| Accession No. | Swiss-Prot: Q9GZR5NCBI Gene ID: 6785 |
| Uniprot | Q9GZR5 |
| GeneID | 6785; |
| SDS-PAGE MW | 37kd |
| Concentration | 1mg/ml |
| Formulation | Liquid in PBS containing 50% glycerol, 0.5% BSA and 0.02% sodium azide. |
| Storage | Store at -20°C/1 year |

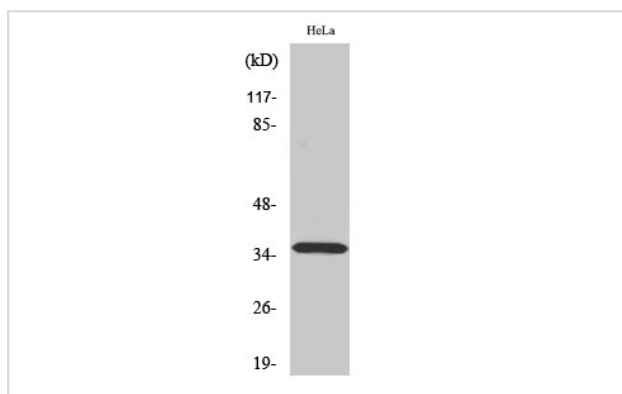
Application Details

Western Blot: 1/500 - 1/2000.

ELISA: 1/40000.

Not yet tested in other applications.

Images



Western Blot analysis of HeLa cells using ELOVL4 Polyclonal Antibody

Note: This product is for in vitro research use only