

EMMPRIN Polyclonal Antibody

Catalog No: #40879

Package Size: #40879-1 50ul #40879-2 100ul

Orders: order@signalwayantibody.comSupport: tech@signalwayantibody.com

Description

Product Name	EMMPRIN Polyclonal Antibody
Host Species	Rabbit
Clonality	Polyclonal
Purification	The antibody was affinity-purified from rabbit antiserum by affinity-chromatography using epitope-specific immunogen.
Applications	WB IHC ELISA
Species Reactivity	Hu Ms Rt
Specificity	EMMPRIN Polyclonal Antibody detects endogenous levels of EMMPRIN protein.
Immunogen Type	peptide
Immunogen Description	Synthesized peptide derived from the C-terminal region of human EMMPRIN.
Target Name	EMMPRIN
Other Names	BSG; Basigin; 5F7; Collagenase stimulatory factor; Extracellular matrix metalloproteinase inducer; EMMPRIN; Leukocyte activation antigen M6; OK blood group antigen; Tumor cell-derived collagenase stimulatory factor; TCSF; CD antigen CD147
Accession No.	Swiss-Prot: P35613NCBI Gene ID: 682
Uniprot	P35613
GeneID	682;
SDS-PAGE MW	48kd
Concentration	1mg/ml
Formulation	Liquid in PBS containing 50% glycerol, 0.5% BSA and 0.02% sodium azide.
Storage	Store at -20°C/1 year

Application Details

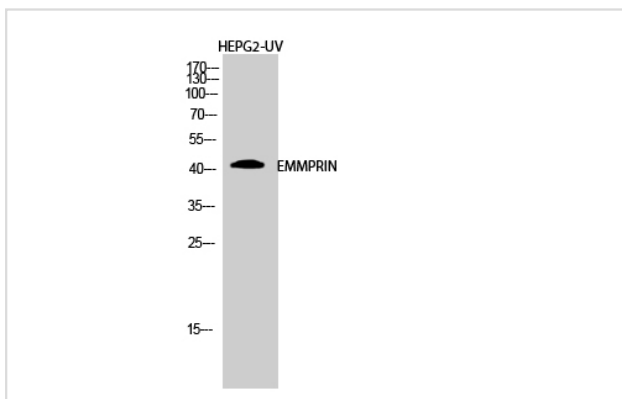
Western Blot: 1/500 - 1/2000.

Immunohistochemistry: 1/100 - 1/300.

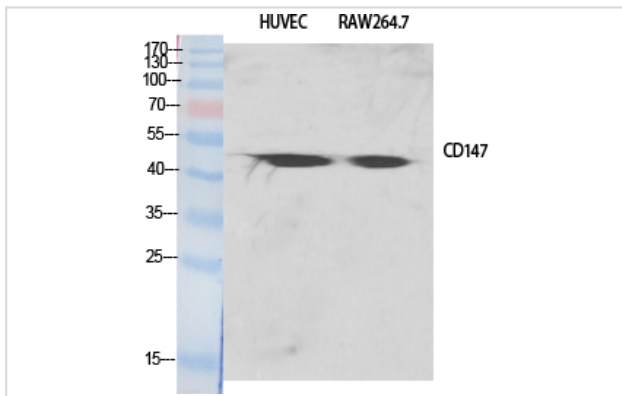
ELISA: 1/10000.

Not yet tested in other applications.

Images



Western Blot analysis of HEPG2-UV cells using EMMPRIN Polyclonal Antibody



Western Blot analysis of HuvEc RAW264.7 cells using EMMPRIN Polyclonal Antibody

Note: This product is for in vitro research use only