

Pramipexole

Catalog No: #S1476

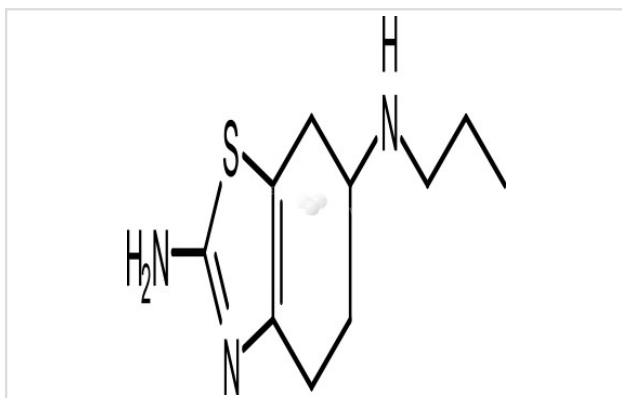
Orders: order@signalwayantibody.com

Support: tech@signalwayantibody.com

Description

Product Name	Pramipexole
Brief Description	Inhibitors
Purification	98.00%
Target Name	Dopamine Receptor agonist
Calculated MW	211.33
Formulation	C10H17N3S
Storage	3 years -20°C powder; 2 years -80°C in solvent;

Images



Product Description

Research Area: Nervous system
SMILES: CCCN[C@H]1CCC2=C(C1)SC(=N2)N
Pathways: GPCR/G Protein; Neuroscience
Receptor: D2L; D2L; D3; D4
Boiling pt: Melting pt: 288-290°C
Solubility: Ethanol: 42 mg/mL (198.74 mM); DMSO: 42 mg/mL (198.74 mM)
Appearance: White Powder
Remark: For obtaining a higher solubility, please warm the tube at 37 °C and shake it in the ultrasonic bath for a while. Stock solution can be stored below -20 °C for several months.

References

1. Kvernmo T, et al. *Curr Top Med Chem.* 2008;8(12):1049-67.

Note: This product is for in vitro research use only