

Indapamide

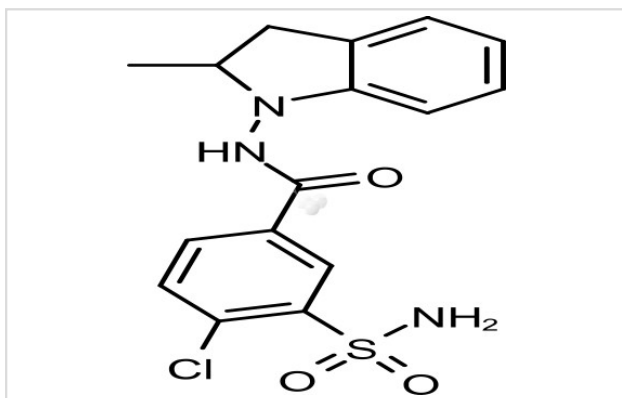
Catalog No: #S1498

Orders: order@signalwayantibody.comSupport: tech@signalwayantibody.com

Description

| | |
|-------------------|---|
| Product Name | Indapamide |
| Brief Description | Inhibitors |
| Purification | 99.83% |
| Target Name | Potassium Channel inhibitor |
| Calculated MW | 365.84 |
| Formulation | C16H16ClN3O3S |
| Storage | 3 years -20°C powder; 2 years -80°C in solvent; |

Images



Product Description

Research Area: Cardiovascular System
 SMILES: CC1CC2=CC=CC=C2N1NC(=O)C1=CC(=C(Cl)C=C1)S(N)(=O)=O
 Pathways: Membrane transporter/Ion channel
 Receptor: Potassium Channel
 Boiling pt: 160-162°C
 Melting pt: Solubility: Ethanol: 73 mg/mL (199.54 mM); DMSO: 73 mg/mL (199.54 mM)
 Appearance: White Powder
 Remark: For obtaining a higher solubility, please warm the tube at 37 °C and shake it in the ultrasonic bath for a while. Stock solution can be stored below -20 °C for several month.

References

1. Pedersen EB, et al. Eur J Clin Pharmacol, 1984. 26(5): p. 543-7.

Note: This product is for in vitro research use only