

## Endoplasmin Polyclonal Antibody

Catalog No: #40883

Package Size: #40883-1 50ul #40883-2 100ul

Orders: [order@signalwayantibody.com](mailto:order@signalwayantibody.com)Support: [tech@signalwayantibody.com](mailto:tech@signalwayantibody.com)

## Description

Product Name	Endoplasmin Polyclonal Antibody
Host Species	Rabbit
Clonality	Polyclonal
Purification	The antibody was affinity-purified from rabbit antiserum by affinity-chromatography using epitope-specific immunogen.
Applications	WB IHC IF ELISA
Species Reactivity	Hu Ms
Specificity	Endoplasmin Polyclonal Antibody detects endogenous levels of Endoplasmin protein.
Immunogen Type	peptide
Immunogen Description	Synthesized peptide derived from the C-terminal region of human Endoplasmin.
Target Name	Endoplasmin
Other Names	HSP90B1; GRP94; TRA1; Endoplasmin; 94 kDa glucose-regulated protein; GRP-94; Heat shock protein 90 kDa beta member 1; Tumor rejection antigen 1; gp96 homolog
Accession No.	Swiss-Prot: P14625NCBI Gene ID: 7184
Uniprot	P14625
GeneID	7184;
SDS-PAGE MW	92kd
Concentration	1mg/ml
Formulation	Liquid in PBS containing 50% glycerol, 0.5% BSA and 0.02% sodium azide.
Storage	Store at -20°C/1 year

## Application Details

Western Blot: 1/500 - 1/2000.

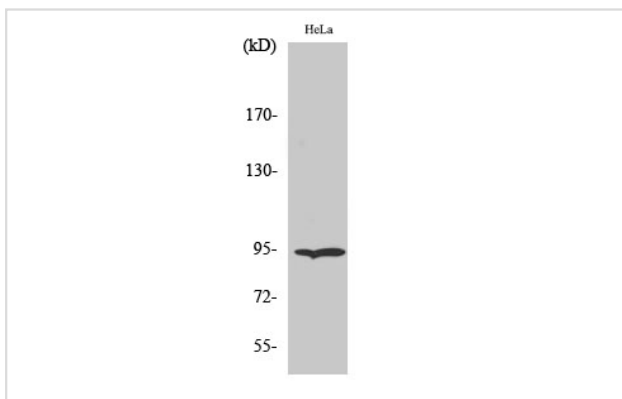
Immunohistochemistry: 1/100 - 1/300.

Immunofluorescence: 1/200 - 1/1000.

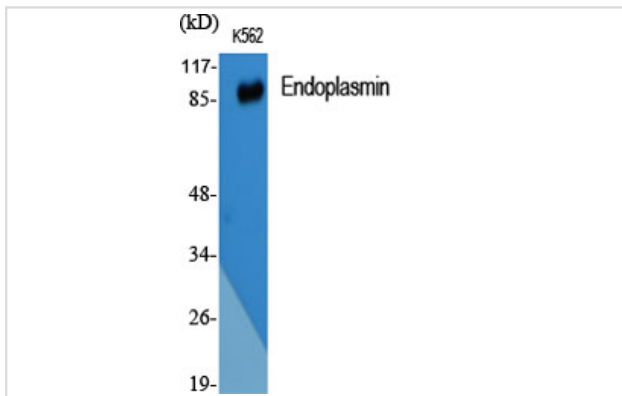
ELISA: 1/20000.

Not yet tested in other applications.

## Images



Western Blot analysis of HeLa cells using Endoplasmin Polyclonal Antibody



Western Blot analysis of K562 cells using Endoplasmin Polyclonal Antibody

---

Note: This product is for in vitro research use only