

EphA3 Polyclonal Antibody

Catalog No: #40887

Package Size: #40887-1 50ul #40887-2 100ul

Orders: order@signalwayantibody.comSupport: tech@signalwayantibody.com

Description

Product Name	EphA3 Polyclonal Antibody
Host Species	Rabbit
Clonality	Polyclonal
Purification	The antibody was affinity-purified from rabbit antiserum by affinity-chromatography using epitope-specific immunogen.
Applications	WB ELISA
Species Reactivity	Hu Ms Rt
Specificity	EphA3 Polyclonal Antibody detects endogenous levels of EphA3 protein.
Immunogen Type	peptide
Immunogen Description	Synthesized peptide derived from the C-terminal region of human EphA3.
Target Name	EphA3
Other Names	EPHA3; ETK; ETK1; HEK; TYRO4; Ephrin type-A receptor 3; EPH-like kinase 4; EK4; hEK4; HEK; Human embryo kinase; Tyrosine-protein kinase TYRO4; Tyrosine-protein kinase receptor ETK1; Eph-like tyrosine kinase 1
Accession No.	Swiss-Prot: P29320NCBI Gene ID: 2042
Uniprot	P29320
GeneID	2042;
SDS-PAGE MW	120kd
Concentration	1mg/ml
Formulation	Liquid in PBS containing 50% glycerol, 0.5% BSA and 0.02% sodium azide.
Storage	Store at -20°C/1 year

Application Details

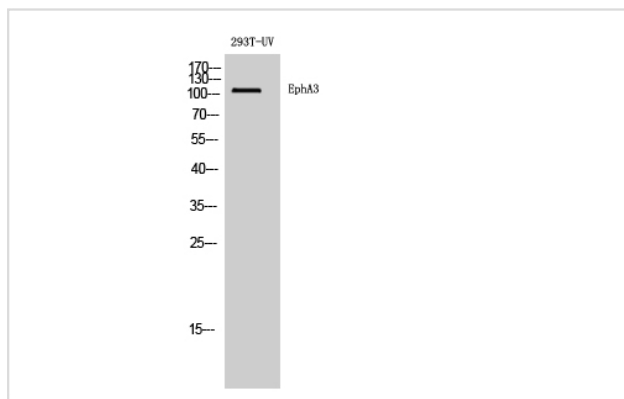
Western Blot: 1/500 - 1/2000.

ELISA: 1/40000.

Not yet tested in other applications.

Images

Western Blot analysis of 293T-UV cells using EphA3 Polyclonal Antibody



Note: This product is for in vitro research use only