

## Ephrin-A1 Polyclonal Antibody

Catalog No: #40892

Package Size: #40892-1 50ul #40892-2 100ul

Orders: [order@signalwayantibody.com](mailto:order@signalwayantibody.com)Support: [tech@signalwayantibody.com](mailto:tech@signalwayantibody.com)

## Description

Product Name	Ephrin-A1 Polyclonal Antibody
Host Species	Rabbit
Clonality	Polyclonal
Purification	The antibody was affinity-purified from rabbit antiserum by affinity-chromatography using epitope-specific immunogen.
Applications	WB IHC IF ELISA
Species Reactivity	Hu Ms Rt
Specificity	Ephrin-A1 Polyclonal Antibody detects endogenous levels of Ephrin-A1 protein.
Immunogen Type	peptide
Immunogen Description	Synthesized peptide derived from the Internal region of human Ephrin-A1.
Target Name	Ephrin-A1
Other Names	EFNA1; EPLG1; LERK1; TNFAIP4; Ephrin-A1; EPH-related receptor tyrosine kinase ligand 1; LERK-1; Immediate early response protein B61; Tumor necrosis factor alpha-induced protein 4; TNF alpha-induced protein 4
Accession No.	Swiss-Prot: P20827NCBI Gene ID: 1942
Uniprot	P20827
GeneID	1942;
SDS-PAGE MW	24kd
Concentration	1mg/ml
Formulation	Liquid in PBS containing 50% glycerol, 0.5% BSA and 0.02% sodium azide.
Storage	Store at -20°C/1 year

## Application Details

Western Blot: 1/500 - 1/2000.

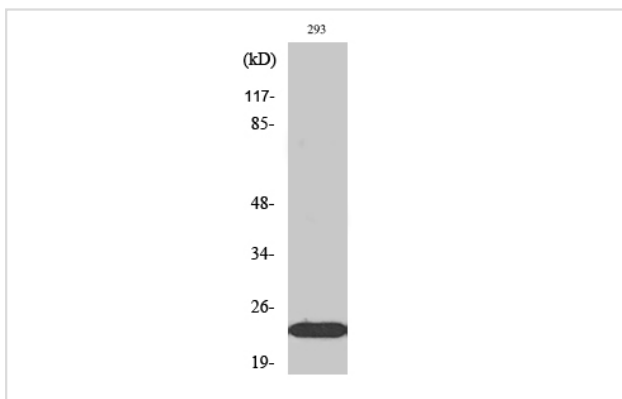
Immunohistochemistry: 1/100 - 1/300.

Immunofluorescence: 1/200 - 1/1000.

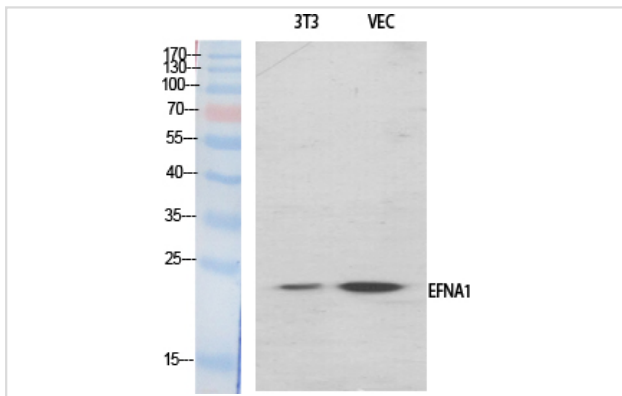
ELISA: 1/10000.

Not yet tested in other applications.

## Images



Western Blot analysis of Jurkat cells using Ephrin-A1 Polyclonal Antibody



Western Blot analysis of NIH-3T3 VEC cells using Ephrin-A1 Polyclonal Antibody

Note: This product is for in vitro research use only