

## Ephrin-A4 Polyclonal Antibody

Catalog No: #40893

Package Size: #40893-1 50ul #40893-2 100ul

Orders: [order@signalwayantibody.com](mailto:order@signalwayantibody.com)Support: [tech@signalwayantibody.com](mailto:tech@signalwayantibody.com)

## Description

Product Name	Ephrin-A4 Polyclonal Antibody
Host Species	Rabbit
Clonality	Polyclonal
Purification	The antibody was affinity-purified from rabbit antiserum by affinity-chromatography using epitope-specific immunogen.
Applications	WB ELISA
Species Reactivity	Hu Ms
Specificity	Ephrin-A4 Polyclonal Antibody detects endogenous levels of Ephrin-A4 protein.
Immunogen Type	peptide
Immunogen Description	Synthesized peptide derived from the C-terminal region of human Ephrin-A4.
Target Name	Ephrin-A4
Other Names	EFNA4; EPLG4; LERK4; Ephrin-A4; EPH-related receptor tyrosine kinase ligand 4; LERK-4
Accession No.	Swiss-Prot: P52798NCBI Gene ID: 1945
Uniprot	P52798
GeneID	1945;
SDS-PAGE MW	95kd
Concentration	1mg/ml
Formulation	Liquid in PBS containing 50% glycerol, 0.5% BSA and 0.02% sodium azide.
Storage	Store at -20°C/1 year

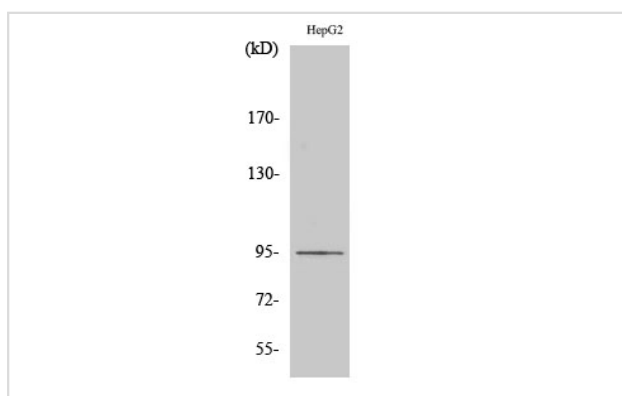
## Application Details

Western Blot: 1/500 - 1/2000.

ELISA: 1/40000.

Not yet tested in other applications.

## Images



Western Blot analysis of HepG2 cells using Ephrin-A4 Polyclonal Antibody

---

Note: This product is for in vitro research use only