

Ephrin-B1/2 Polyclonal Antibody

Catalog No: #40894

Package Size: #40894-1 50ul #40894-2 100ul

Orders: order@signalwayantibody.comSupport: tech@signalwayantibody.com

Description

Product Name	Ephrin-B1/2 Polyclonal Antibody
Host Species	Rabbit
Clonality	Polyclonal
Purification	The antibody was affinity-purified from rabbit antiserum by affinity-chromatography using epitope-specific immunogen.
Applications	WB IHC ELISA
Species Reactivity	Hu Ms Rt
Specificity	Ephrin-B1/2 Polyclonal Antibody detects endogenous levels of Ephrin-B1/2 protein.
Immunogen Type	peptide
Immunogen Description	Synthesized peptide derived from human Ephrin-B1/2 around the non-phosphorylation site of Y330.
Target Name	Ephrin-B1/2
Other Names	EFNB1; EFL3; EPLG2; LERK2; Ephrin-B1; EFL-3; ELK ligand; ELK-L; EPH-related receptor tyrosine kinase ligand 2; LERK-2; EFNB2; EPLG5; HTKL; LERK5; Ephrin-B2; EPH-related receptor tyrosine kinase ligand 5; LERK-5; HTK ligand; HTK-L
Accession No.	Swiss-Prot: P98172/P52799NCBI Gene ID: 1947/1948
Uniprot	P98172
GeneID	1947;
SDS-PAGE MW	59kd
Concentration	1mg/ml
Formulation	Liquid in PBS containing 50% glycerol, 0.5% BSA and 0.02% sodium azide.
Storage	Store at -20°C/1 year

Application Details

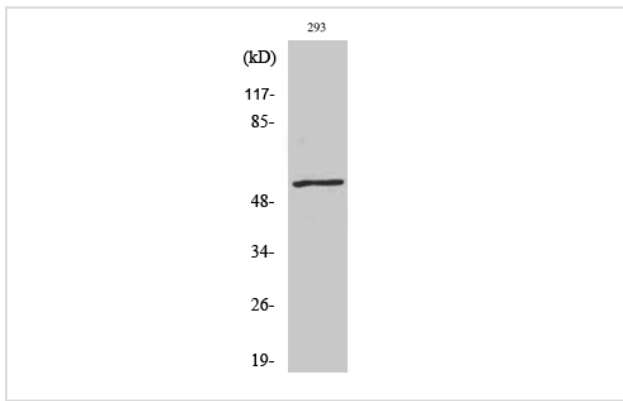
Western Blot: 1/500 - 1/2000.

Immunohistochemistry: 1/100 - 1/300.

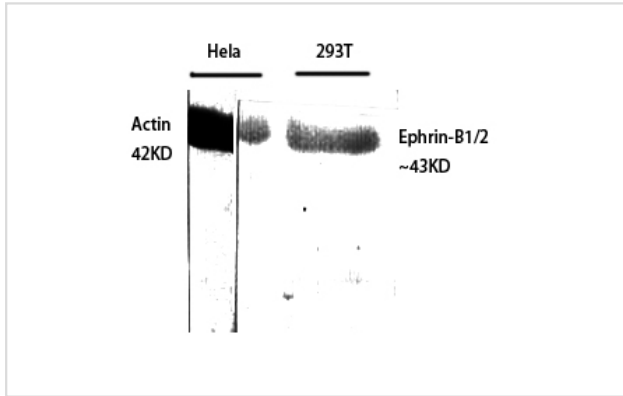
ELISA: 1/40000.

Not yet tested in other applications.

Images



Western Blot analysis of 293 cells using Ephrin-B1/2 Polyclonal Antibody



Western Blot analysis of HELA 293T cells using Ephrin-B1/2 Polyclonal Antibody

Note: This product is for in vitro research use only