

ERAP1 Polyclonal Antibody

Catalog No: #40897

Package Size: #40897-1 50ul #40897-2 100ul

Orders: order@signalwayantibody.comSupport: tech@signalwayantibody.com

Description

Product Name	ERAP1 Polyclonal Antibody
Host Species	Rabbit
Clonality	Polyclonal
Purification	The antibody was affinity-purified from rabbit antiserum by affinity-chromatography using epitope-specific immunogen.
Applications	WB IHC IF ELISA
Species Reactivity	Hu Ms Rt
Specificity	ERAP1 Polyclonal Antibody detects endogenous levels of ERAP1 protein.
Immunogen Type	peptide
Immunogen Description	Synthesized peptide derived from the Internal region of human ERAP1.
Target Name	ERAP1
Other Names	ERAP1; APPILS; ARTS1; KIAA0525; Endoplasmic reticulum aminopeptidase 1; ARTS-1; Adipocyte-derived leucine aminopeptidase; A-LAP; Aminopeptidase PILS; Puromycin-insensitive leucyl-specific aminopeptidase; PILS-AP; Type 1 tumor necrosis facto
Accession No.	Swiss-Prot: Q9NZ08NCBI Gene ID: 51752
Uniprot	Q9NZ08
GeneID	51752;
SDS-PAGE MW	107kd
Concentration	1mg/ml
Formulation	Liquid in PBS containing 50% glycerol, 0.5% BSA and 0.02% sodium azide.
Storage	Store at -20°C/1 year

Application Details

Western Blot: 1/500 - 1/2000.

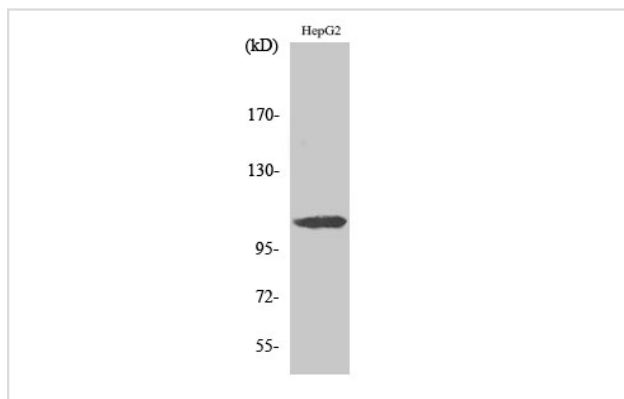
Immunohistochemistry: 1/100 - 1/300.

Immunofluorescence: 1/200 - 1/1000.

ELISA: 1/20000.

Not yet tested in other applications.

Images



Western Blot analysis of rat lung cells using ERAP1 Polyclonal Antibody

Note: This product is for in vitro research use only