

ERK 1 Polyclonal Antibody

Catalog No: #40900

Package Size: #40900-1 50ul #40900-2 100ul

Orders: order@signalwayantibody.comSupport: tech@signalwayantibody.com

Description

Product Name	ERK 1 Polyclonal Antibody
Host Species	Rabbit
Clonality	Polyclonal
Purification	The antibody was affinity-purified from rabbit antiserum by affinity-chromatography using epitope-specific immunogen.
Applications	WB IF ELISA
Species Reactivity	Hu Ms Rt
Specificity	ERK 1 Polyclonal Antibody detects endogenous levels of ERK 1 protein.
Immunogen Type	peptide
Immunogen Description	Synthesized peptide derived from the Internal region of human ERK 1.
Target Name	ERK 1
Other Names	MAPK3; ERK1; PRKM3; Mitogen-activated protein kinase 3; MAP kinase 3; MAPK 3; ERT2; Extracellular signal-regulated kinase 1; ERK-1; Insulin-stimulated MAP2 kinase; MAP kinase isoform p44; p44-MAPK; Microtubule-associated protein 2 kinase; p
Accession No.	Swiss-Prot: P27361NCBI Gene ID: 5595
Uniprot	P27361
GeneID	5595;
SDS-PAGE MW	45kd
Concentration	1mg/ml
Formulation	Liquid in PBS containing 50% glycerol, 0.5% BSA and 0.02% sodium azide.
Storage	Store at -20°C/1 year

Application Details

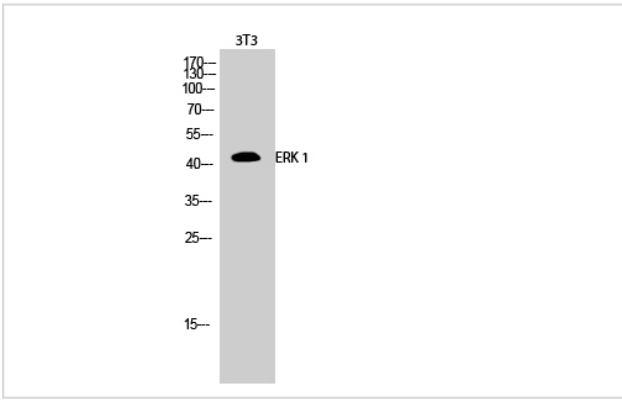
Western Blot: 1/500 - 1/2000.

Immunofluorescence: 1/200 - 1/1000.

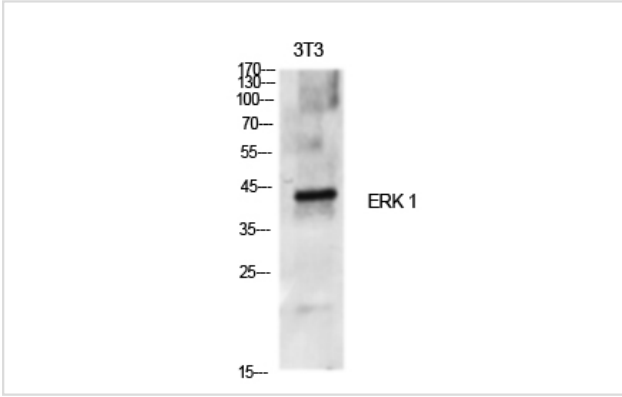
ELISA: 1/40000.

Not yet tested in other applications.

Images



Western Blot analysis of 3T3 cells using ERK 1 Polyclonal Antibody



Western Blot analysis of NIH-3T3 cells using ERK 1 Polyclonal Antibody

Note: This product is for in vitro research use only