

ERK 2 Polyclonal Antibody

Catalog No: #40904

Package Size: #40904-1 50ul #40904-2 100ul

Orders: order@signalwayantibody.comSupport: tech@signalwayantibody.com

Description

Product Name	ERK 2 Polyclonal Antibody
Host Species	Rabbit
Clonality	Polyclonal
Purification	The antibody was affinity-purified from rabbit antiserum by affinity-chromatography using epitope-specific immunogen.
Applications	WB IHC IF ELISA
Species Reactivity	Hu Ms Rt
Specificity	ERK 2 Polyclonal Antibody detects endogenous levels of ERK 2 protein.
Immunogen Description	Synthesized peptide derived from the Internal region of human ERK 2.
Target Name	ERK 2
Other Names	MAPK1; ERK2; PRKM1; PRKM2; Mitogen-activated protein kinase 1; MAP kinase 1; MAPK 1; ERT1; Extracellular signal-regulated kinase 2; ERK-2; MAP kinase isoform p42; p42-MAPK; Mitogen-activated protein kinase 2; MAP kinase 2; MAPK 2
Accession No.	Swiss-Prot: P28482NCBI Gene ID: 5594
Uniprot	P28482
GeneID	5594;
SDS-PAGE MW	42kd
Concentration	1mg/ml
Formulation	Liquid in PBS containing 50% glycerol, 0.5% BSA and 0.02% sodium azide.
Storage	Store at -20°C/1 year

Application Details

Western Blot: 1/500 - 1/2000.

Immunohistochemistry: 1/100 - 1/300.

Immunofluorescence: 1/200 - 1/1000.

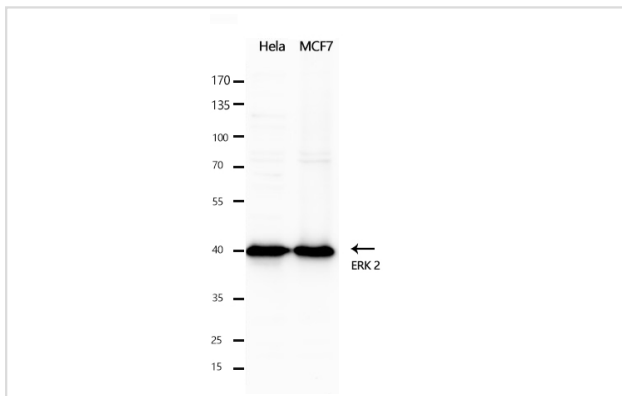
ELISA: 1/5000.

Not yet tested in other applications.

Images



Western Blot analysis of 3T3 cells using ERK 2 Polyclonal Antibody



Western Blot analysis of HeLa /MCF7 cells using ERK 2 Polyclonal Antibody

Note: This product is for in vitro research use only