

Esomeprazole sodium

Catalog No: #S1756

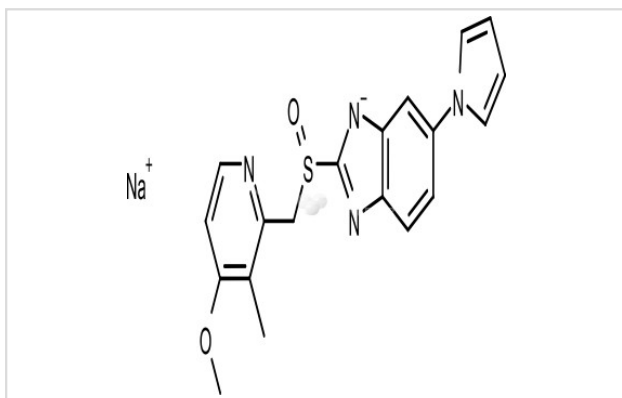
Orders: order@signalwayantibody.com

Support: tech@signalwayantibody.com

Description

| | |
|-------------------|---|
| Product Name | Esomeprazole sodium |
| Brief Description | Inhibitors |
| Purification | 98.00% |
| Target Name | Proton pump inhibitor |
| Calculated MW | 388.44 |
| Formulation | C ₁₉ H ₁₇ N ₄ O ₂ SNa |
| Storage | 3 years -20°C powder; 2 years -80°C in solvent; |

Images



Product Description

Research Area: Immunology
 SMILES: [Na+].CC1=C(C=CN=C1CS(=O)C2=NC3=C([N-]2)C=C(C=C3)N4C=CC=C4)OC
 Pathways: Membrane transporter/Ion channel
 Receptor: Proton pump
 Boiling pt: Melting pt: Solubility: Soluble in DMSO
 Appearance: White Powder
 Remark: For obtaining a higher solubility, please warm the tube at 37 °C and shake it in the ultrasonic bath for a while. Stock solution can be stored below -20 °C for several months.

References

- Seo KA, et al. Xenobiotica. 2012 Mar;42(3):278-84.

Note: This product is for in vitro research use only