

ER $\beta$  Polyclonal Antibody

Catalog No: #40908

Package Size: #40908-1 50ul #40908-2 100ul

Orders: order@signalwayantibody.com

Support: tech@signalwayantibody.com

## Description

Product Name	ER $\beta$ Polyclonal Antibody
Host Species	Rabbit
Clonality	Polyclonal
Purification	The antibody was affinity-purified from rabbit antiserum by affinity-chromatography using epitope-specific immunogen.
Applications	WB IF ELISA
Species Reactivity	Hu Ms Rt
Specificity	ER $\beta$ Polyclonal Antibody detects endogenous levels of ER $\beta$ protein.
Immunogen Type	peptide
Immunogen Description	Synthesized peptide derived from human ER $\beta$ around the non-phosphorylation site of S105.
Target Name	ER $\beta$
Other Names	ESR2; ESTRB; NR3A2; Estrogen receptor beta; ER-beta; Nuclear receptor subfamily 3 group A member 2
Accession No.	Swiss-Prot: Q92731NCBI Gene ID: 2100
Uniprot	Q92731
GeneID	2100;
SDS-PAGE MW	59kd
Concentration	1mg/ml
Formulation	Liquid in PBS containing 50% glycerol, 0.5% BSA and 0.02% sodium azide.
Storage	Store at -20°C/1 year

## Application Details

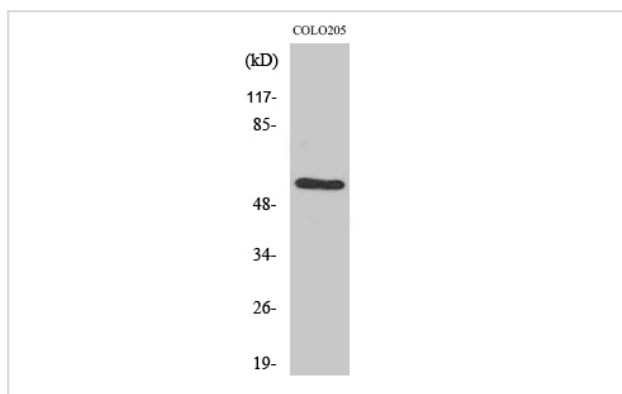
Western Blot: 1/500 - 1/2000.

Immunofluorescence: 1/200 - 1/1000.

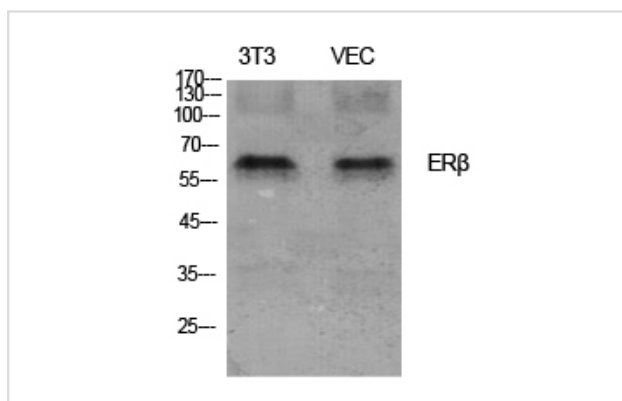
ELISA: 1/10000.

Not yet tested in other applications.

## Images

Western Blot analysis of COLO205 cells using ER $\beta$  Polyclonal Antibody

Western Blot analysis of NIH-3T3 VEC cells using ER $\beta$  Polyclonal Antibody



Note: This product is for in vitro research use only