

## ETS1 Polyclonal Antibody

Catalog No: #40909

Package Size: #40909-1 50ul #40909-2 100ul

Orders: [order@signalwayantibody.com](mailto:order@signalwayantibody.com)Support: [tech@signalwayantibody.com](mailto:tech@signalwayantibody.com)

## Description

Product Name	ETS1 Polyclonal Antibody
Host Species	Rabbit
Clonality	Polyclonal
Purification	The antibody was affinity-purified from rabbit antiserum by affinity-chromatography using epitope-specific immunogen.
Applications	WB IHC IF ELISA
Species Reactivity	Hu Ms Rt
Specificity	ETS1 Polyclonal Antibody detects endogenous levels of ETS1 protein.
Immunogen Type	peptide
Immunogen Description	Synthesized peptide derived from human Ets-1 around the non-phosphorylation site of T38.
Target Name	ETS1
Other Names	ETS1; EWSR2; Protein C-ets-1; p54
Accession No.	Swiss-Prot: P14921NCBI Gene ID: 2113
Uniprot	P14921
GeneID	2113;
SDS-PAGE MW	50kd
Concentration	1mg/ml
Formulation	Liquid in PBS containing 50% glycerol, 0.5% BSA and 0.02% sodium azide.
Storage	Store at -20°C/1 year

## Application Details

Western Blot: 1/500 - 1/2000.

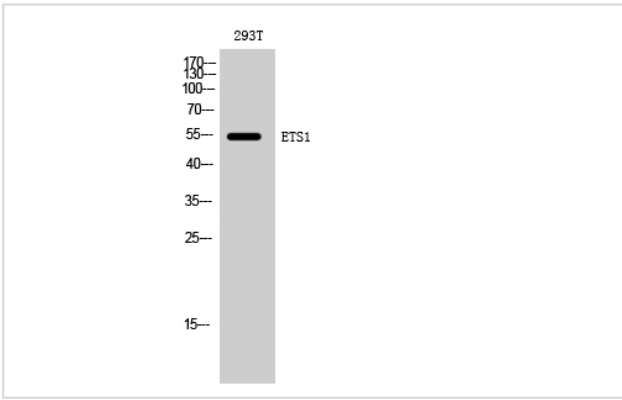
Immunohistochemistry: 1/100 - 1/300.

Immunofluorescence: 1/200 - 1/1000.

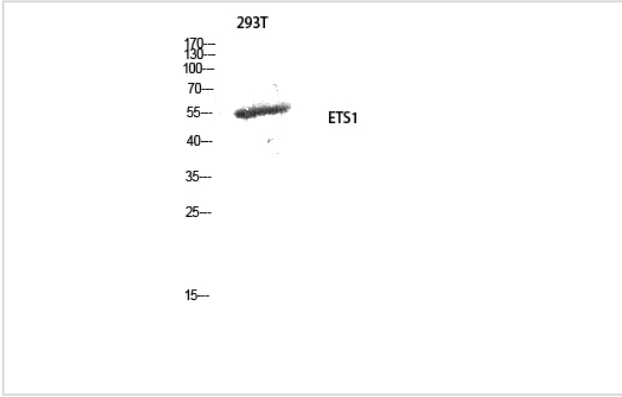
ELISA: 1/5000.

Not yet tested in other applications.

## Images



Western Blot analysis of 293T cells using ETS1 Polyclonal Antibody



Western Blot analysis of 293T cells using ETS1 Polyclonal Antibody

Note: This product is for in vitro research use only