

## FANCD2 Polyclonal Antibody

Catalog No: #40920

Package Size: #40920-1 50ul #40920-2 100ul

Orders: [order@signalwayantibody.com](mailto:order@signalwayantibody.com)Support: [tech@signalwayantibody.com](mailto:tech@signalwayantibody.com)

## Description

Product Name	FANCD2 Polyclonal Antibody
Host Species	Rabbit
Clonality	Polyclonal
Purification	The antibody was affinity-purified from rabbit antiserum by affinity-chromatography using epitope-specific immunogen.
Applications	WB IHC ELISA
Species Reactivity	Hu Ms Rt
Specificity	FANCD2 Polyclonal Antibody detects endogenous levels of FANCD2 protein.
Immunogen Type	peptide
Immunogen Description	Synthesized peptide derived from human FANCD2 around the non-phosphorylation site of S222.
Target Name	FANCD2
Other Names	FANCD2; FACD; Fanconi anemia group D2 protein; Protein FACD2
Accession No.	Swiss-Prot: Q9BXW9NCBI Gene ID: 2177
Uniprot	Q9BXW9
GeneID	2177;
SDS-PAGE MW	166kd
Concentration	1mg/ml
Formulation	Liquid in PBS containing 50% glycerol, 0.5% BSA and 0.02% sodium azide.
Storage	Store at -20°C/1 year

## Application Details

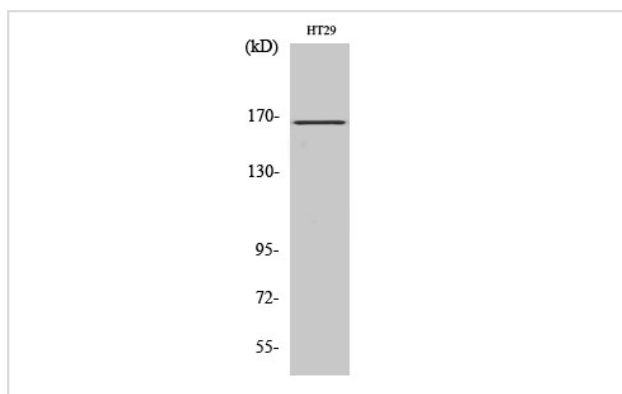
Western Blot: 1/500 - 1/2000.

Immunohistochemistry: 1/100 - 1/300.

ELISA: 1/10000.

Not yet tested in other applications.

## Images



Western Blot analysis of HT29 cells using FANCD2 Polyclonal Antibody

---

Note: This product is for in vitro research use only