

## Flk-1 Polyclonal Antibody

Catalog No: #40929

Package Size: #40929-1 50ul #40929-2 100ul

Orders: [order@signalwayantibody.com](mailto:order@signalwayantibody.com)Support: [tech@signalwayantibody.com](mailto:tech@signalwayantibody.com)

## Description

|                       |  |
|-----------------------|--|
| Product Name          | Flk-1 Polyclonal Antibody  |
| Host Species          | Rabbit   |
| Clonality             | Polyclonal   |
| Purification          | The antibody was affinity-purified from rabbit antiserum by affinity-chromatography using epitope-specific immunogen.  |
| Applications          | WB IHC IF ELISA  |
| Species Reactivity    | Hu Ms  |
| Specificity           | Flk-1 Polyclonal Antibody detects endogenous levels of Flk-1 protein.  |
| Immunogen Type        | peptide  |
| Immunogen Description | Synthesized peptide derived from human Flk-1 around the non-phosphorylation site of Y951.  |
| Target Name           | Flk-1  |
| Other Names           | KDR; FLK1; VEGFR2; Vascular endothelial growth factor receptor 2; VEGFR-2; Fetal liver kinase 1; FLK-1; Kinase insert domain receptor; KDR; Protein-tyrosine kinase receptor flk-1; CD antigen CD309 |
| Accession No.         | Swiss-Prot: P35968NCBI Gene ID: 3791   |
| Uniprot               | P35968   |
| GeneID                | 3791;  |
| SDS-PAGE MW           | 170kd  |
| Concentration         | 1mg/ml   |
| Formulation           | Liquid in PBS containing 50% glycerol, 0.5% BSA and 0.02% sodium azide.  |
| Storage               | Store at -20°C/1 year  |

## Application Details

Western Blot: 1/500 - 1/2000.

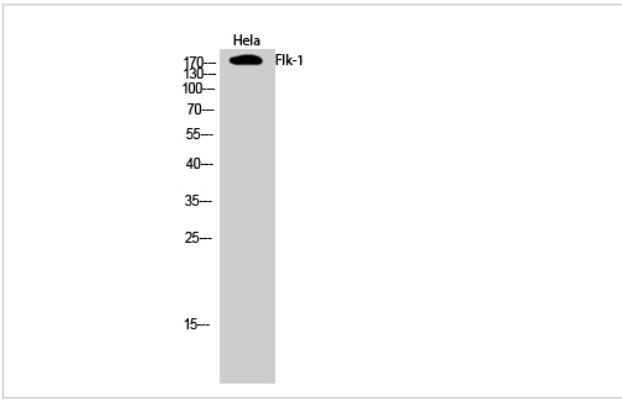
Immunohistochemistry: 1/100 - 1/300.

Immunofluorescence: 1/200 - 1/1000.

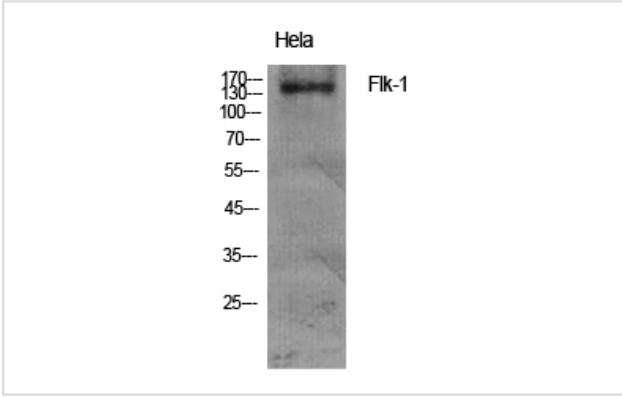
ELISA: 1/20000.

Not yet tested in other applications.

## Images



Western Blot analysis of HeLa cells using Flk-1 Polyclonal Antibody



Western Blot analysis of HELA cells using Flk-1 Polyclonal Antibody

---

Note: This product is for in vitro research use only