

## FN1 Polyclonal Antibody

Catalog No: #40932

Package Size: #40932-1 50ul #40932-2 100ul

Orders: [order@signalwayantibody.com](mailto:order@signalwayantibody.com)Support: [tech@signalwayantibody.com](mailto:tech@signalwayantibody.com)

## Description

Product Name	FN1 Polyclonal Antibody
Host Species	Rabbit
Clonality	Polyclonal
Purification	The antibody was affinity-purified from rabbit antiserum by affinity-chromatography using epitope-specific immunogen.
Applications	WB IHC ELISA IF
Species Reactivity	Hu Ms Rt
Specificity	FN1 Polyclonal Antibody detects endogenous levels of FN1 protein.
Immunogen Description	Synthesized peptide derived from the C-terminal region of human FN1.
Target Name	FN1
Other Names	FN1; FN; Fibronectin; FN; Cold-insoluble globulin; CIG
Accession No.	Swiss-Prot: P02751NCBI Gene ID: 2335
Uniprot	P02751
GeneID	2335;
SDS-PAGE MW	260kd
Concentration	1mg/ml
Formulation	Liquid in PBS containing 50% glycerol, 0.5% BSA and 0.02% sodium azide.
Storage	Store at -20°C/1 year

## Application Details

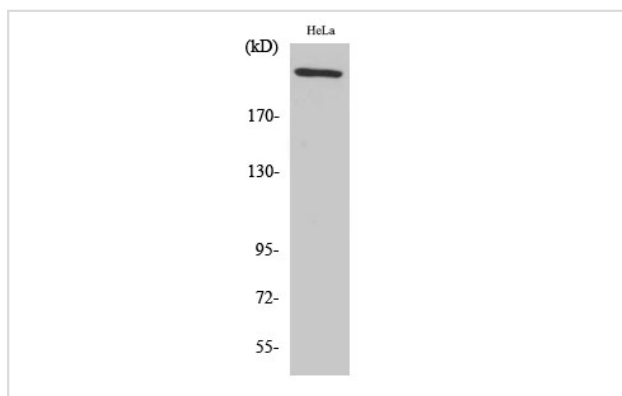
Western Blot: 1/500 - 1/2000.

Immunohistochemistry: 1/100 - 1/300.

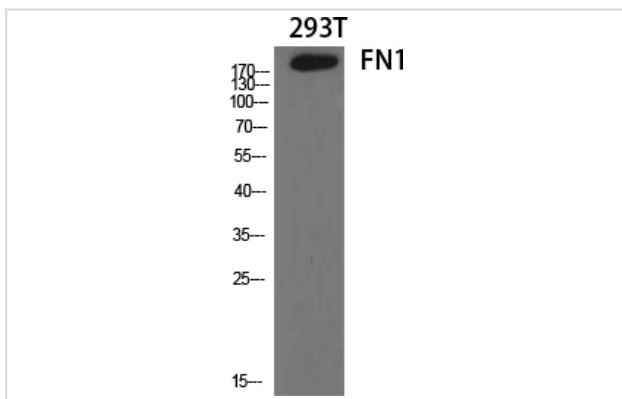
ELISA: 1/20000.

Not yet tested in other applications.

## Images



Western Blot analysis of HeLa cells using FN1 Polyclonal Antibody



Western Blot analysis of 293T cells using FN1 Polyclonal Antibody

---

Note: This product is for in vitro research use only