

Methiothepin mesylate

Catalog No: #S2190

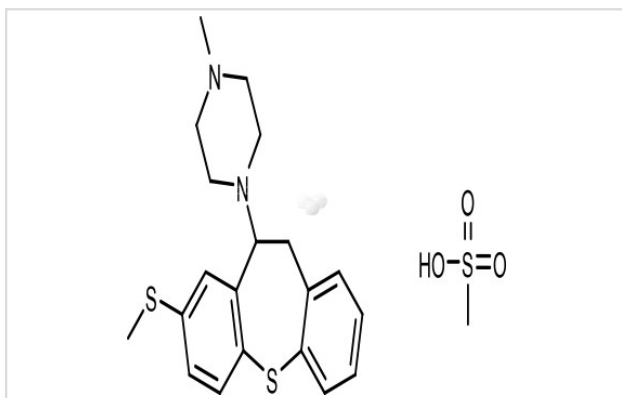
Orders: order@signalwayantibody.com

Support: tech@signalwayantibody.com

Description

Product Name	Methiothepin mesylate
Brief Description	Inhibitors
Purification	98.00%
Target Name	5-HT Receptor antagonist; Dopamine Receptor antagonist
Calculated MW	452.65
Formulation	C ₂₁ H ₂₈ N ₂ O ₃ S ₃
Storage	3 years -20°C powder; 2 years -80°C in solvent;

Images



Product Description

Research Area: Nervous system
 SMILES: CS(=O)(=O)OC1=CC=C(SC2=CC=CC=C2CCN2CCN(C)CC2)C=C1
 Pathways: GPCR/G Protein;
 Neuroscience Receptor: 5-HT; Dopamine
 Boiling pt: Melting pt: Solubility: DMSO: 10 mM
 Appearance: White Powder
 Remark: For obtaining a higher solubility, please warm the tube at 37 °C and shake it in the ultrasonic bath for a while. Stock solution can be stored below -20 °C for several months.

References

1. Dall'Olio R, et al. Pharmacol Biochem Behav. 1985 Jul;23(1):43-8.

Note: This product is for in vitro research use only