

## GATA-1 Polyclonal Antibody

Catalog No: #40952

Package Size: #40952-1 50ul #40952-2 100ul

Orders: [order@signalwayantibody.com](mailto:order@signalwayantibody.com)Support: [tech@signalwayantibody.com](mailto:tech@signalwayantibody.com)

## Description

Product Name	GATA-1 Polyclonal Antibody
Host Species	Rabbit
Clonality	Polyclonal
Purification	The antibody was affinity-purified from rabbit antiserum by affinity-chromatography using epitope-specific immunogen.
Applications	WB IHC IP IF ELISA
Species Reactivity	Hu Ms Rt
Specificity	GATA-1 Polyclonal Antibody detects endogenous levels of GATA-1 protein.
Immunogen Type	peptide
Immunogen Description	Synthesized peptide derived from human GATA-1 around the non-phosphorylation site of S142.
Target Name	GATA-1
Other Names	GATA1; ERYF1; GF1; Erythroid transcription factor; Eryf1; GATA-binding factor 1; GATA-1; GF-1; NF-E1 DNA-binding protein
Accession No.	Swiss-Prot: P15976NCBI Gene ID: 2623
Uniprot	P15976
GeneID	2623;
SDS-PAGE MW	43kd
Concentration	1mg/ml
Formulation	Liquid in PBS containing 50% glycerol, 0.5% BSA and 0.02% sodium azide.
Storage	Store at -20°C/1 year

## Application Details

Western Blot: 1/500 - 1/2000.

Immunohistochemistry: 1/100 - 1/300. Immunoprec

Immunoprecipitation: 2-5 ug/mg lysate.

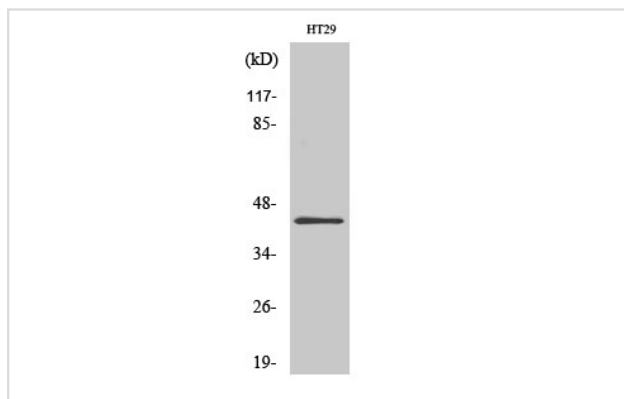
Immunofluorescence: 1/200 - 1/1000.

ELISA: 1/10000.

Not yet tested in other applications.

## Images

Western Blot analysis of HT29 cells using GATA-1 Polyclonal Antibody



---

Note: This product is for in vitro research use only